

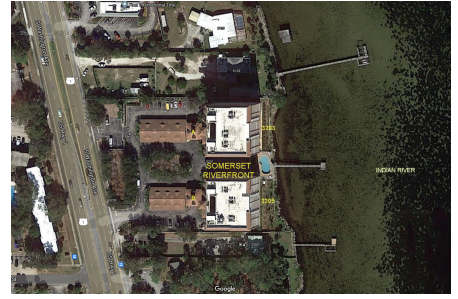
# Somerset Riverfront A&B

3203 S Washington Ave, Titusville, FL, Brevard 32780

## Building Information

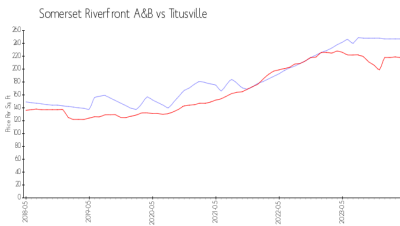
Number of units: 54  
 Number of active listings for rent: 0  
 Number of active listings for sale: 0  
 Building inventory for sale:  
 Number of sales over the last 12 months: 0%  
 Number of sales over the last 6 months: 0  
 Number of sales over the last 3 months: 0

Somerset Riverfront Condo Association  
 Address: 3205 S Washington Ave, Titusville, FL 32780  
 Phone: +1 321-267-5628

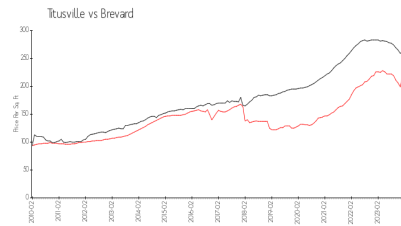


Built in 2006 - 54 units - 10 floors

## Market Information



Somerset Riverfront A&B: \$247/sq. ft.  
 Titusville: \$218/sq. ft.



Titusville: \$218/sq. ft.  
 Brevard: \$226/sq. ft.

## Inventory for Sale

Somerset Riverfront A&B  
 Titusville  
 0%  
 Brevard

## Avg. Time to Close Over Last 12 Months

Somerset Riverfront A&B: 20 days  
 Titusville: 28 days  
 Brevard: 39 days