

# Unit 620 Beach Park Ln # V263 - Villages of Seaport (The)

620 Beach Park Ln # V263 - 100-722 Beach Park Ln, Cape Canaveral, FL, Brevard 32920

## Unit Information

MLS Number: 1006058  
Status: Active  
Size: 640 Sq ft.  
Bedrooms: 1  
Full Bathrooms: 1  
Half Bathrooms:  
Parking Spaces: Assigned  
View:  
List Price: \$1,750  
List PPSF: \$3  
Valuated Price: \$74,000  
Valuated PPSF: \$114

*The above valuated price is a baseline figure that does not take into account any specific renovation, upgrade, split, merge, or deterioration of the unit.*

## Building Information

Number of units: 558  
Number of active listings for rent: 0  
Number of active listings for sale: 3  
Building inventory for sale: 0%  
Number of sales over the last 12 months: 4  
Number of sales over the last 6 months: 3  
Number of sales over the last 3 months: 3

## Building Association Information

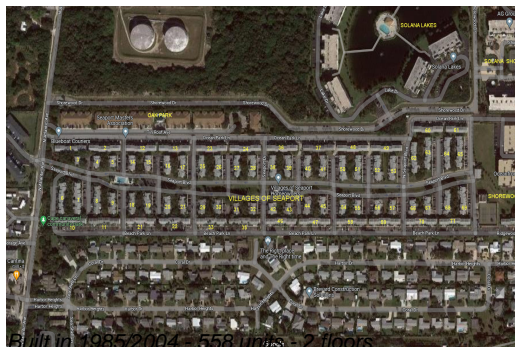
Villages of Seaport  
Condominium Assoc., Inc  
Association Manager  
(321) 784-6400  
(321) 890-4489  
Assistant Manager  
(321) 784-6400  
(301) 643-3924  
Admin  
(321) 784-6400  
Guard  
(321) 783-8046

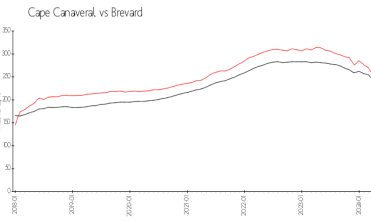
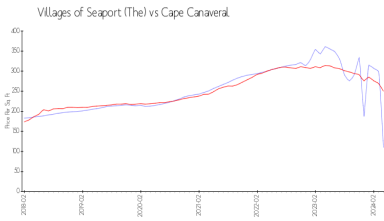
<https://www.myvos.org/>

## Recent Sales

Unit #	Size	Closing Date	Sale Price	PPSF
V265	703 sq ft	Apr 2024	\$242,000	\$344
189	1,014 sq ft	Apr 2024	\$325,000	\$321
T15	1,120 sq ft	Mar 2024	\$269,000	\$240
V170	1,014 sq ft	Sep 2023	\$255,000	\$251

## Market Information





Villages of Seaport (The): \$110/sq. ft.  
 Cape Canaveral: \$250/sq. ft.

Cape Canaveral: \$250/sq. ft.  
 Brevard: \$226/sq. ft.

### Inventory for Sale

Villages of Seaport (The) 1%  
 Cape Canaveral 1%  
 Brevard 1%

### Avg. Time to Close Over Last 12 Months

Villages of Seaport (The) 86 days  
 Cape Canaveral 30 days  
 Brevard 41 days