

Unit 1408 - Bishop's Court at Windsor Parke

1408 - 13700-13703 Richmond Park Dr N, Jacksonville, FL, Duval 32224

Unit Information

MLS Number: 1008405
 Status: Closed
 Size: 1,229 Sq ft.
 Bedrooms: 2
 Full Bathrooms: 2
 Half Bathrooms:
 Parking Spaces: Unassigned
 View:
 List Price: \$165,000
 List PPSF: \$134
 Valuated Price: \$251,000
 Valuated PPSF: \$204

The above valuated price is a baseline figure that does not take into account any specific renovation, upgrade, split, merge, or deterioration of the unit.

Building Information

Number of units: 324
 Number of active listings for rent: 0
 Number of active listings for sale: 2
 Building inventory for sale: 0%
 Number of sales over the last 12 months: 20
 Number of sales over the last 6 months: 5
 Number of sales over the last 3 months: 3

Building Association Information

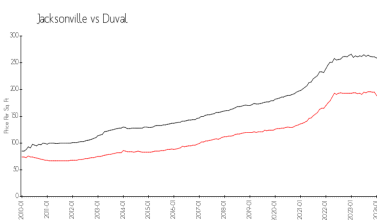
Bishop's Court At Windsor Park
 Condominium Complex
 Address: 13700 Richmond Park Dr N, Jacksonville, FL 32224,
 Phone:+1 904-821-0156

<http://windsorparke.org/>

Recent Sales

Unit #	Size	Closing Date	Sale Price	PPSF
2207	1,229 sq ft	Apr 2024	\$276,000	\$225
2302	757 sq ft	Apr 2024	\$178,000	\$235
2308	1,229 sq ft	Mar 2024	\$218,000	\$177
901	757 sq ft	Jan 2024	\$159,000	\$210
704	499 sq ft	Dec 2023	\$165,000	\$331

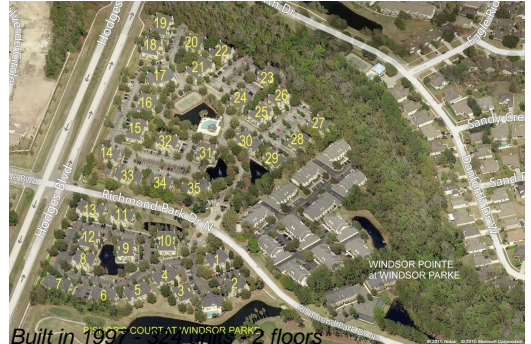
Market Information



Bishop's Court at Windsor Parke:	\$203/sq. ft.	Jacksonville:	\$180/sq. ft.
Jacksonville:	\$180/sq. ft.	Duval:	\$222/sq. ft.

Inventory for Sale

Bishop's Court at Windsor Parke 1%



Jacksonville	1%
Duval	1%

Avg. Time to Close Over Last 12 Months

Bishop's Court at Windsor Parke	n/a
Jacksonville	46 days
Duval	45 days