

Unit 302 - Moffett Place

302 - 1300 Moffett St, Hallandale Beach, FL, Broward 33009

Unit Information

MLS Number:	A11494590
Status:	Active
Size:	715 Sq ft.
Bedrooms:	1
Full Bathrooms:	1
Half Bathrooms:	1
Parking Spaces:	1 Space,Assigned Parking,Guest Parking
View:	
List Price:	\$244,591
List PPSF:	\$342
Valuated Price:	\$233,000
Valuated PPSF:	\$326

The above valuated price is a baseline figure that does not take into account any specific renovation, upgrade, split, merge, or deterioration of the unit.

Building Information

Number of units:	44
Number of active listings for rent:	0
Number of active listings for sale:	1
Building inventory for sale:	2%
Number of sales over the last 12 months:	1
Number of sales over the last 6 months:	0
Number of sales over the last 3 months:	0

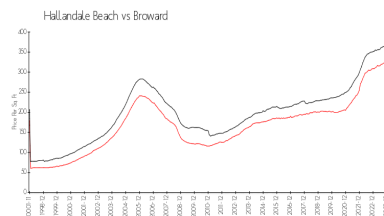
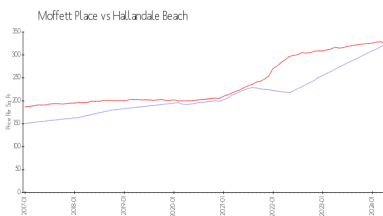
Building Association Information

Moffett Place
 1300 Moffett St
 Hallandale Beach, FL 33009
 Phone: (954) 458-5761

Recent Sales

Unit #	Size	Closing Date	Sale Price	PPSF
112	715 sq ft	Jul 2023	\$200,000	\$280

Market Information



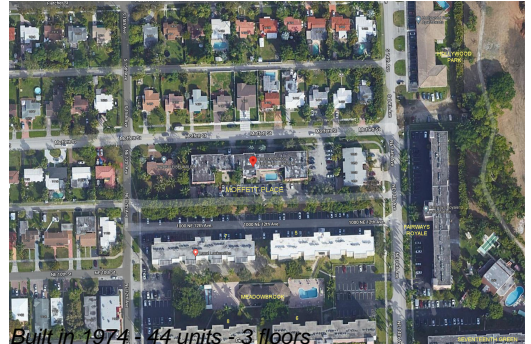
Moffett Place:	\$322/sq. ft.	Hallandale Beach:	\$325/sq. ft.
Hallandale Beach:	\$325/sq. ft.	Broward:	\$351/sq. ft.

Inventory for Sale

Moffett Place	2%
Hallandale Beach	4%
Broward	4%

Avg. Time to Close Over Last 12 Months

Moffett Place	9 days
Hallandale Beach	76 days



Broward

67 days