

Unit 9113 SW 138th PI - Parc Vista

9113 SW 138th PI - 9051-9541 SW 138 PI, Kendall, FL, Miami-Dade 33186

Unit Information

MLS Number: A11575289
 Status: Active
 Size: 1,224 Sq ft.
 Bedrooms: 2
 Full Bathrooms: 2
 Half Bathrooms:
 Parking Spaces: 1 Space, Additional Spaces Available, Guest Parking
 View:
 List Price: \$350,000
 List PPSF: \$286
 Valuated Price: \$330,000
 Valuated PPSF: \$270

The above valuated price is a baseline figure that does not take into account any specific renovation, upgrade, split, merge, or deterioration of the unit.

Building Information

Number of units: 502
 Number of active listings for rent: 0
 Number of active listings for sale: 3
 Building inventory for sale: 0%
 Number of sales over the last 12 months: 12
 Number of sales over the last 6 months: 5
 Number of sales over the last 3 months: 3

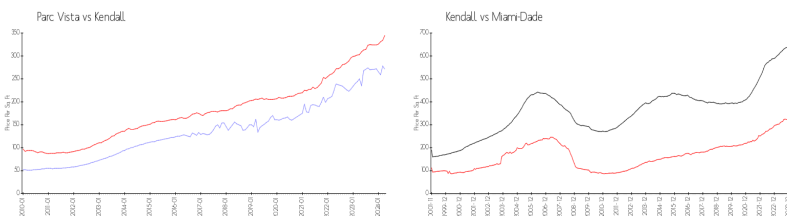
Building Association Information

Parc Vista Condo Association Inc
 14001 SW 93rd Ln,
 Miami, FL 33186
 (305) 385-1091

Recent Sales

Unit #	Size	Closing Date	Sale Price	PPSF
9201	1,224 sq ft	Mar 2024	\$325,000	\$266
14004	862 sq ft	Mar 2024	\$247,500	\$287
9546	978 sq ft	Feb 2024	\$255,000	\$261
9440	862 sq ft	Dec 2023	\$245,000	\$284
13853	1,224 sq ft	Dec 2023	\$318,000	\$260

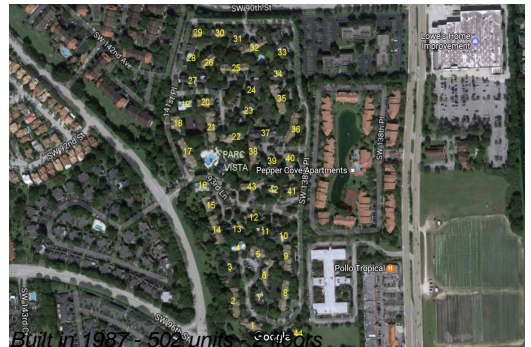
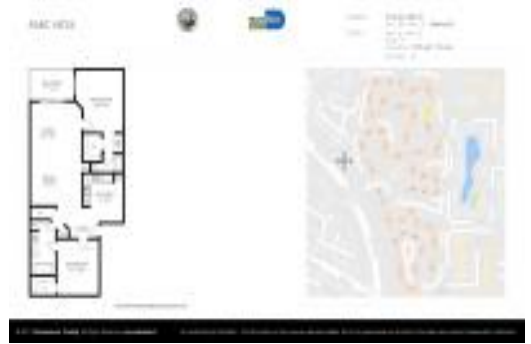
Market Information



Parc Vista: \$271/sq. ft. Kendall: \$345/sq. ft.
 Kendall: \$345/sq. ft. Miami-Dade: \$694/sq. ft.

Inventory for Sale

Parc Vista: 1%
 Kendall: 1%
 Miami-Dade: 3%



Avg. Time to Close Over Last 12 Months

Parc Vista	14 days
Kendall	27 days
Miami-Dade	81 days