

Unit 1-532 - Flagler Pointe

1-532 - 1805 N Flagler Drive, West Palm Beach, FL, Palm Beach 33407

Unit Information

MLS Number: A11551376
 Status: Active
 Size: 662 Sq ft.
 Bedrooms: 1
 Full Bathrooms: 1
 Half Bathrooms:
 Parking Spaces: Guest Parking
 View: Intracoastal View
 Rental Price: \$2,000
 List PPSF: \$3
 Valuated Price: \$264,000
 Valuated PPSF: \$399

The above valuated price is a baseline figure that does not take into account any specific renovation, upgrade, split, merge, or deterioration of the unit.

Building Information

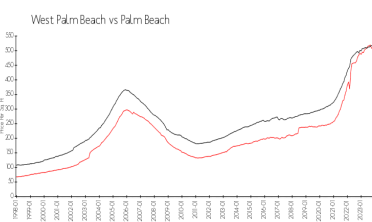
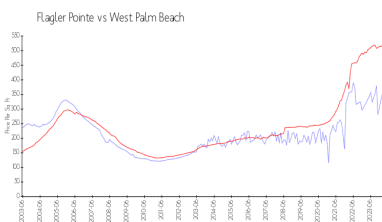
Number of units: 400
 Number of active listings for rent: 27
 Number of active listings for sale: 23
 Building inventory for sale: 5%
 Number of sales over the last 12 months: 24
 Number of sales over the last 6 months: 13
 Number of sales over the last 3 months: 7

Building Association Information

Flagler Pointe Condominium Association of
 West Palm Beach, Inc
 c/o Castle Management, LLC
 1801 North Flagler Drive
 West Palm Beach, FL 33407
 Phone: (561) 822-9970
 Concierge: (561) 833-7024

<http://flaglerpointe.us/Management-Contacts~301897~20085.htm>

Market Information



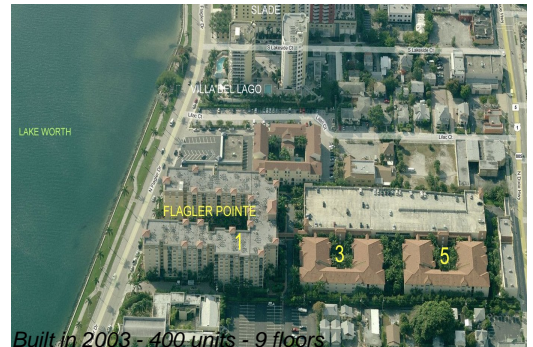
Flagler Pointe: \$394/sq. ft. West Palm Beach: \$511/sq. ft.
 West Palm Beach: \$511/sq. ft. Palm Beach: \$475/sq. ft.

Inventory for Sale

Flagler Pointe: 6%
 West Palm Beach: 4%
 Palm Beach: 3%

Avg. Time to Close Over Last 12 Months

Flagler Pointe: 67 days
 West Palm Beach: 52 days



Palm Beach

56 days