

# Unit 417 - Mayan Towers North

417 - 145 S Ocean Ave, Palm Beach Shores, FL, Palm Beach 33404

## Unit Information

MLS Number: RX-10892155  
 Status: Active  
 Size: 1,047 Sq ft.  
 Bedrooms: 2  
 Full Bathrooms: 2  
 Half Bathrooms: 0  
 Parking Spaces: Assigned  
 View: City,Ocean  
 Rental Price: \$5,000  
 List PPSF: \$5  
 Valuated Price: \$401,000  
 Valuated PPSF: \$383

*The above valuated price is a baseline figure that does not take into account any specific renovation, upgrade, split, merge, or deterioration of the unit.*

## Building Information

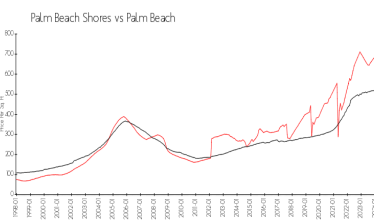
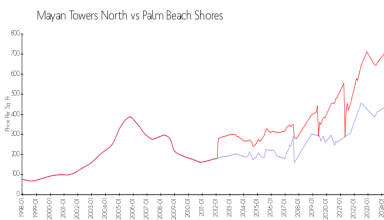
Number of units: 140  
 Number of active listings for rent: 0  
 Number of active listings for sale: 1  
 Building inventory for sale: 0%  
 Number of sales over the last 12 months: 3  
 Number of sales over the last 6 months: 0  
 Number of sales over the last 3 months: 0

## Building Association Information

Mayan Towers North  
 CONTACT INFO  
 145 S. Ocean Avenue  
 Palm Beach Shores, FL 33404  
 Email: MayanTowersNorth@bellsouth.net  
 Office Phone: 561.848.2306  
 Office Fax: 561.848.2729

<http://mayantowersnorth.com/condo/>

## Market Information



Mayan Towers North: \$437/sq. ft.  
 Palm Beach Shores: \$710/sq. ft.

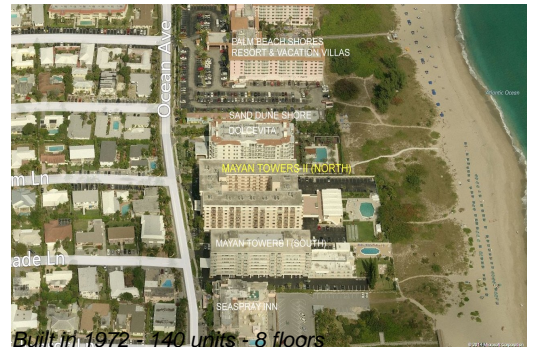
Palm Beach Shores: \$710/sq. ft.  
 Palm Beach: \$475/sq. ft.

## Inventory for Sale

Mayan Towers North: 1%  
 Palm Beach Shores: 2%  
 Palm Beach: 3%

## Avg. Time to Close Over Last 12 Months

Mayan Towers North: 161 days  
 Palm Beach Shores: 98 days



Palm Beach

56 days