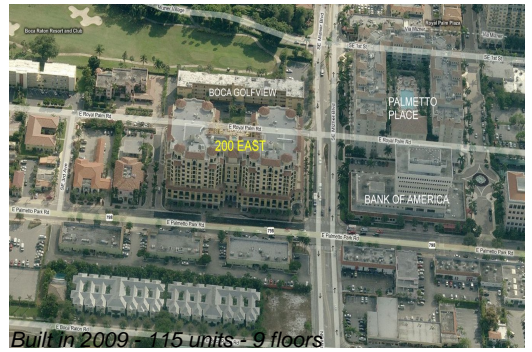


# Unit PH-11 - 200 East

PH-11 - 200 E Palmetto Park Rd, Boca Raton, FL, Palm Beach 33432

## Unit Information

MLS Number:	RX-10918738
Status:	Active
Size:	4,854 Sq ft.
Bedrooms:	3
Full Bathrooms:	3
Half Bathrooms:	1
Parking Spaces:	Garage - Attached, Garage - Building
View:	City, Ocean
List Price:	\$4,495,000
List PPSF:	\$926
Valuated Price:	\$4,495,000
Valuated PPSF:	\$1,082



*The above valuated price is a baseline figure that does not take into account any specific renovation, upgrade, split, merge, or deterioration of the unit.*

## Building Information

Number of units:	115
Number of active listings for rent:	1
Number of active listings for sale:	5
Building inventory for sale:	4%
Number of sales over the last 12 months:	10
Number of sales over the last 6 months:	8
Number of sales over the last 3 months:	5

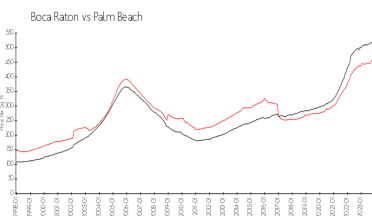
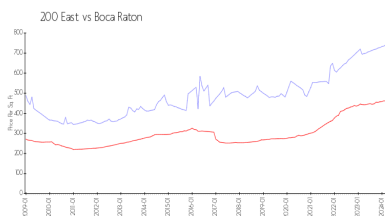
## Building Association Information

200 East Palmetto Park Condominium Association, 200 E Palmetto Park Road  
 Boca Raton, FL33432  
 (561) 368-9045

## Recent Sales

Unit #	Size	Closing Date	Sale Price	PPSF
802	2,168 sq ft	Apr 2024	\$1,599,000	\$738
401	3,518 sq ft	Apr 2024	\$1,525,000	\$433
509	2,156 sq ft	Mar 2024	\$1,825,000	\$846
810	2,018 sq ft	Feb 2024	\$1,500,000	\$743
707	2,549 sq ft	Feb 2024	\$1,700,000	\$667
705	2,490 sq ft	Feb 2024	\$1,665,000	\$669
702	2,168 sq ft	Feb 2024	\$1,600,000	\$738

## Market Information



200 East:	\$744/sq. ft.	Boca Raton:	\$463/sq. ft.
Boca Raton:	\$463/sq. ft.	Palm Beach:	\$475/sq. ft.

## Inventory for Sale

200 East	4%
Boca Raton	3%
Palm Beach	3%

**Avg. Time to Close Over Last 12 Months**

200 East	59 days
Boca Raton	57 days
Palm Beach	56 days