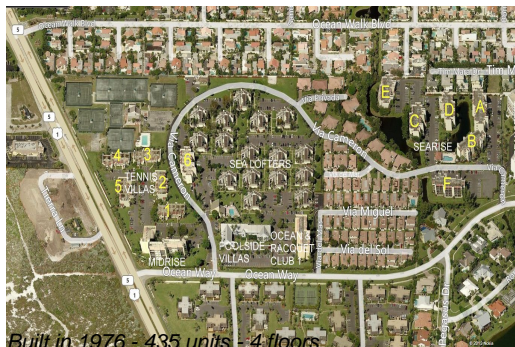


# Unit Sea Lofters B-6 - Jupiter Ocean & Racquet Club

Sea Lofters B-6 - 1605 S US Hwy 1, Jupiter, FL, Palm Beach 33477

## Unit Information

MLS Number:	RX-10974902
Status:	Active
Size:	740 Sq ft.
Bedrooms:	1
Full Bathrooms:	1
Half Bathrooms:	0
Parking Spaces:	Assigned,Guest,Vehicle Restrictions
View:	Garden
Rental Price:	\$2,200
List PPSF:	\$3
Valuated Price:	\$341,000
Valuated PPSF:	\$461



*The above valuated price is a baseline figure that does not take into account any specific renovation, upgrade, split, merge, or deterioration of the unit.*

## Building Information

Number of units:	435
Number of active listings for rent:	0
Number of active listings for sale:	25
Building inventory for sale:	5%
Number of sales over the last 12 months:	21
Number of sales over the last 6 months:	9
Number of sales over the last 3 months:	4

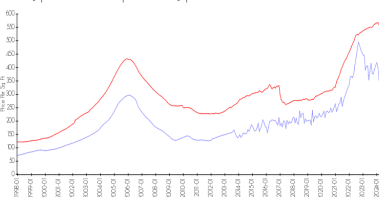
## Building Association Information

Jupiter Ocean & Racquet Club Association Address: 1605 U.S. 1,  
Jupiter, FL 33477  
Phone:(561) 747-5331

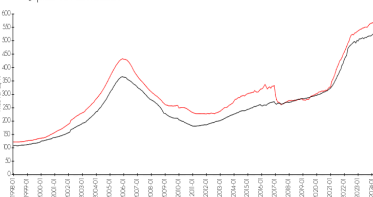
<http://jorcinc.net/site/>

## Market Information

Jupiter Ocean & Racquet Club vs Jupiter



Jupiter vs Palm Beach



Jupiter Ocean & Racquet Club: \$413/sq. ft.  
Jupiter: \$557/sq. ft.

Jupiter: \$557/sq. ft.  
Palm Beach: \$475/sq. ft.

## Inventory for Sale

Jupiter Ocean & Racquet Club	6%
Jupiter	3%
Palm Beach	3%

## Avg. Time to Close Over Last 12 Months

Jupiter Ocean & Racquet Club	63 days
Jupiter	66 days
Palm Beach	56 days