

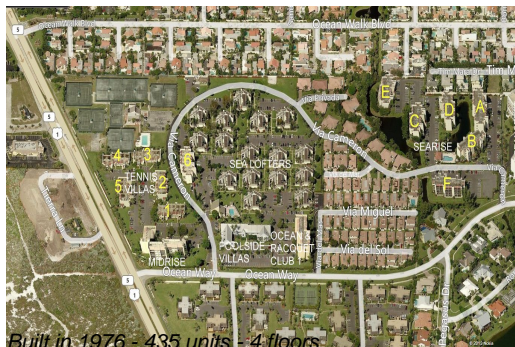
Unit Poolside Villas M-2210 - Jupiter Ocean & Racquet Club

Poolside Villas M-2210 - 1605 S US Hwy 1, Jupiter, FL, Palm Beach 33477

Unit Information

MLS Number:	RX-10981192
Status:	Active
Size:	1,026 Sq ft.
Bedrooms:	2
Full Bathrooms:	2
Half Bathrooms:	0
Parking Spaces:	Assigned,Guest,Vehicle Restrictions
View:	Other
Rental Price:	\$2,100
List PPSF:	\$2
Valuated Price:	\$410,000
Valuated PPSF:	\$400

The above valuated price is a baseline figure that does not take into account any specific renovation, upgrade, split, merge, or deterioration of the unit.



Building Information

Number of units:	435
Number of active listings for rent:	0
Number of active listings for sale:	25
Building inventory for sale:	5%
Number of sales over the last 12 months:	21
Number of sales over the last 6 months:	9
Number of sales over the last 3 months:	4

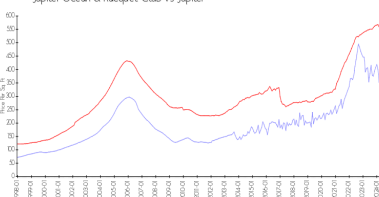
Building Association Information

Jupiter Ocean & Racquet Club Association Address: 1605 U.S. 1,
Jupiter, FL 33477
Phone:(561) 747-5331

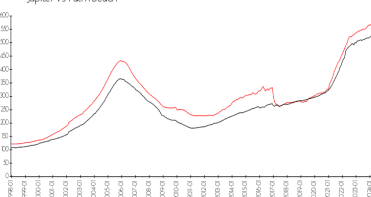
<http://jorcinc.net/site/>

Market Information

Jupiter Ocean & Racquet Club vs Jupiter



Jupiter vs Palm Beach



Jupiter Ocean & Racquet Club: \$413/sq. ft.
Jupiter: \$557/sq. ft.

Jupiter: \$557/sq. ft.
Palm Beach: \$475/sq. ft.

Inventory for Sale

Jupiter Ocean & Racquet Club	6%
Jupiter	3%
Palm Beach	3%

Avg. Time to Close Over Last 12 Months

Jupiter Ocean & Racquet Club	63 days
Jupiter	66 days
Palm Beach	56 days