

# Unit 912 Shoreline Cir - Summer House at Old Ponte Vedra 1

912 Shoreline Cir - 923-948 Seashell Ln, Ponte Vedra Beach, FL, St. Johns 32082

## Unit Information

MLS Number: 2015894  
 Status: Active  
 Size: 1,033 Sq ft.  
 Bedrooms: 2  
 Full Bathrooms: 2  
 Half Bathrooms:  
 Parking Spaces: Guest, Parking Lot  
 View: Pond  
 List Price: \$340,000  
 List PPSF: \$329  
 Valuated Price: \$302,000  
 Valuated PPSF: \$292

*The above valuated price is a baseline figure that does not take into account any specific renovation, upgrade, split, merge, or deterioration of the unit.*

## Building Information

Number of units: 246  
 Number of active listings for rent: 0  
 Number of active listings for sale: 3  
 Building inventory for sale: 1%  
 Number of sales over the last 12 months: 4  
 Number of sales over the last 6 months: 1  
 Number of sales over the last 3 months: 0

## Building Association Information

Summer House at Old Ponte Vedra  
 Management Office  
 Phone: 904 285-4200  
 Fax: 904-273-2552

<http://summerhouse.yolasite.com/>

## Recent Sales

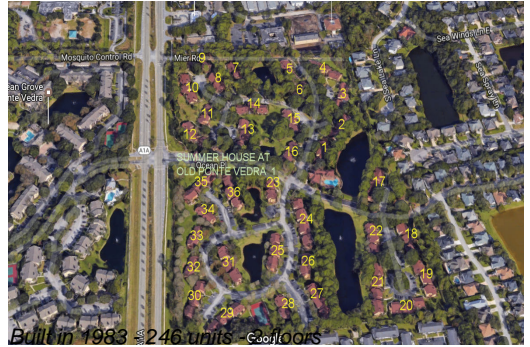
Unit #	Size	Closing Date	Sale Price	PPSF
	1,113 sq ft	Dec 2023	\$305,500	\$274
	1,215 sq ft	Nov 2023	\$365,000	\$300
	1,330 sq ft	Aug 2023	\$387,500	\$291
	734 sq ft	May 2023	\$281,300	\$383

## Market Information

No Image Available	No Image Available
--------------------	--------------------

Summer House at Old Ponte Vedra 1: \$292/sq. ft.  
 Ponte Vedra Beach: \$380/sq. ft.  
 St. Johns: \$340/sq. ft.

## Inventory for Sale



Summer House at Old Ponte Vedra 1	1%
Ponte Vedra Beach	1%
St. Johns	1%

**Avg. Time to Close Over Last 12 Months**

Summer House at Old Ponte Vedra 1	n/a
Ponte Vedra Beach	51 days
St. Johns	61 days