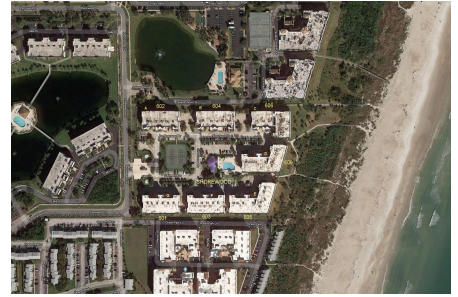


Shorewood A-B-C-D-E-F&G

601 Shorewood Dr, Cape Canaveral, FL, Brevard 32920

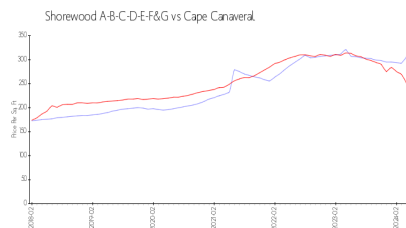
Building Information

Number of units:	196
Number of active listings for rent:	1
Number of active listings for sale:	1
Building inventory for sale:	0%
Number of sales over the last 12 months:	0
Number of sales over the last 6 months:	0
Number of sales over the last 3 months:	0

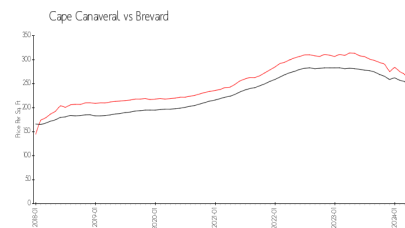


Built in 1997 - 196 units - 5 floors

Market Information



Shorewood A-B-C-D-E-\$307/sq. ft.
F&G:
Cape Canaveral: \$250/sq. ft.



Cape Canaveral: \$250/sq. ft.
Brevard: \$226/sq. ft.

Inventory for Sale

Shorewood A-B-C-D-E-F&G	0%
Cape Canaveral	1%
Brevard	1%

Avg. Time to Close Over Last 12 Months

Shorewood A-B-C-D-E-F&G	n/a
Cape Canaveral	26 days
Brevard	38 days