

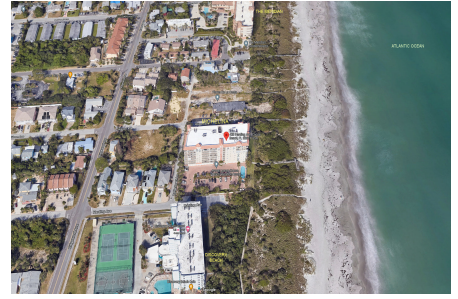
Michelina

420 Harding Ave, Cocoa Beach, FL, Brevard 32931

Building Information

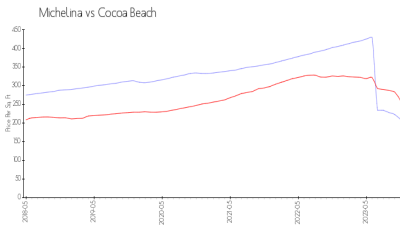
Number of units: 39
 Number of active listings for rent: 0
 Number of active listings for sale: 0
 Building inventory for sale:
 Number of sales over the last 12 months: 0%%
 Number of sales over the last 6 months: 0
 Number of sales over the last 3 months: 0

Michelina Condominium Associates
 Address: 422 Harding Ave,
 Cocoa Beach, FL 32931
 Phone: +1 321-783-0032
 Vesta Property Services
 907 E Strawbridge Ave, Suite 104
 Melbourne, FL 32901
 Phone (321) 241-4946
 Email info-sc@vestapropertyservices.com
 Fax (321) 610-1021
<https://michelinacondos.com/>

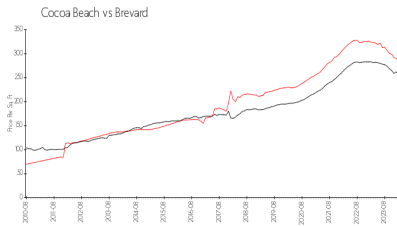


Built in 2006 - 39 units - 8 floors

Market Information



Michelina: \$210/sq. ft.
 Cocoa Beach: \$261/sq. ft.



Cocoa Beach: \$261/sq. ft.
 Brevard: \$226/sq. ft.

Inventory for Sale

Michelina
 Cocoa Beach
 0%%

Brevard

Avg. Time to Close Over Last 12 Months

Michelina n/a
 Cocoa Beach 52 days
 Brevard 40 days