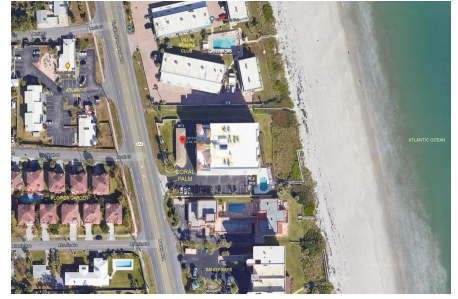


Coral Palm

2875 N Hwy A1A, Indialantic, FL, Brevard 32903

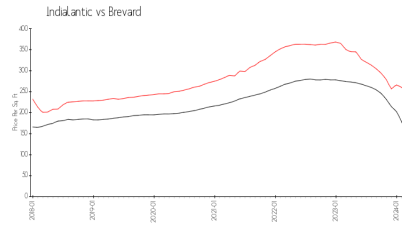
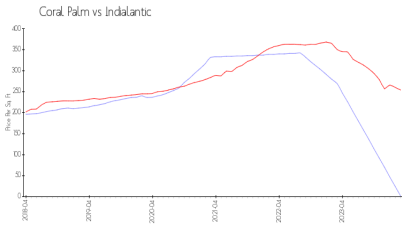
Building Information

Number of units: 31
Number of active listings for rent: 0
Number of active listings for sale: 0
Building inventory for sale:
Number of sales over the last 12 months: 0%
Number of sales over the last 6 months: 0
Number of sales over the last 3 months: 0



Built in 2003 - 31 units - 8 floors

Market Information



Coral Palm: \$2/sq. ft.
Indialantic: \$254/sq. ft.

Indialantic: \$254/sq. ft.
Brevard: \$145/sq. ft.

Inventory for Sale

Coral Palm
Indialantic
0%%

Brevard

Avg. Time to Close Over Last 12 Months

Coral Palm n/a
Indialantic 51 days
Brevard 37 days