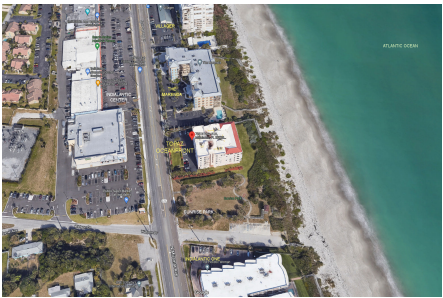


Topaz Oceanfront

735 N Hwy A1A, Indialantic, FL, Brevard 32903

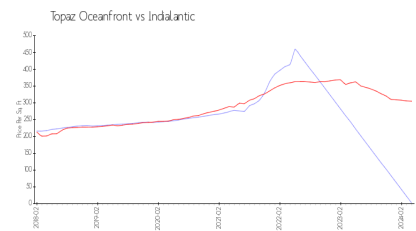
Building Information

Number of units:	28
Number of active listings for rent:	0
Number of active listings for sale:	0
Building inventory for sale:	
Number of sales over the last 12 months:	0%
Number of sales over the last 6 months:	0
Number of sales over the last 3 months:	0

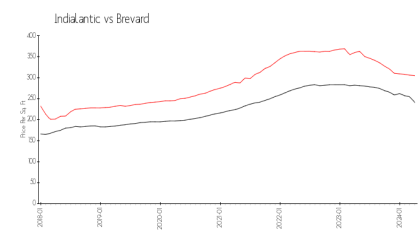


Built in 2002 - 28 units - 6 floors

Market Information



Topaz Oceanfront: \$2/sq. ft.
Indialantic: \$305/sq. ft.



Indialantic: \$305/sq. ft.
Brevard: \$226/sq. ft.

Inventory for Sale

Topaz Oceanfront
Indialantic
0%%

Brevard

Avg. Time to Close Over Last 12 Months

Topaz Oceanfront	n/a
Indialantic	51 days
Brevard	38 days