

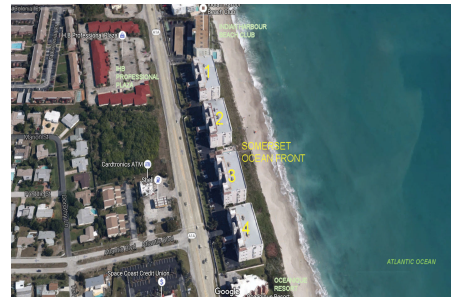
# Somerset Oceanfront 1 2 3&4

2065 Hwy A1A, Indian Harbour Beach, FL, Brevard 32937

## Building Information

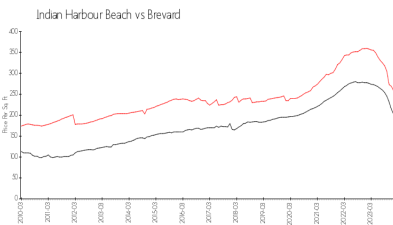
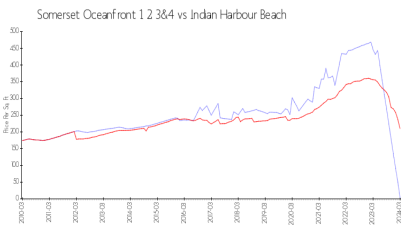
Number of units: 120  
 Number of active listings for rent: 1  
 Number of active listings for sale: 2  
 Building inventory for sale: 1%  
 Number of sales over the last 12 months: 6  
 Number of sales over the last 6 months: 1  
 Number of sales over the last 3 months: 1

Somerset Condominium  
 Address: 2065 Florida A1A,  
 Indian Harbour Beach, FL 32937,  
 Phone: +1 321-773-5214  
<http://www.somersetoceanfrontcondo.com/>



Built in 2003 - 120 units - 7 floors

## Market Information



Somerset Oceanfront 1 \$3/sq. ft.  
 2 3&4:  
 Indian Harbour Beach: \$209/sq. ft.

Indian Harbour Beach: \$209/sq. ft.  
 Brevard: \$145/sq. ft.

## Inventory for Sale

Somerset Oceanfront 1 2 3&4 1%  
 Indian Harbour Beach 3%  
 Brevard 2%

## Avg. Time to Close Over Last 12 Months

Somerset Oceanfront 1 2 3&4 16 days  
 Indian Harbour Beach 2 days  
 Brevard 37 days