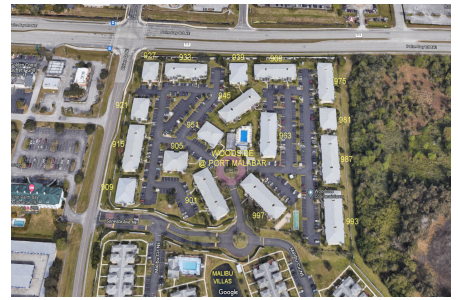


Woodside at Port Malabar

901 Sonesta Ave NE, Palm Bay, FL, Brevard 32905

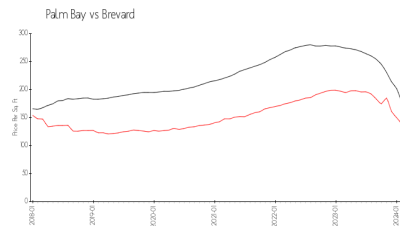
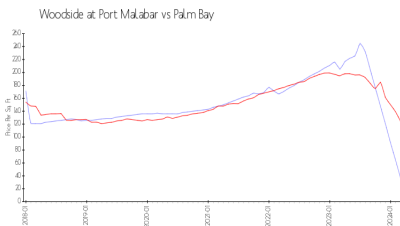
Building Information

Number of units: 216
 Number of active listings for rent: 2
 Number of active listings for sale: 0
 Building inventory for sale:
 Number of sales over the last 12 months: 0%
 Number of sales over the last 6 months: 0
 Number of sales over the last 3 months: 0



Built in 1986 - 216 units - 2 floors

Market Information



Woodside at Port Malabar: \$36/sq. ft.
 Palm Bay: \$124/sq. ft.

Palm Bay: \$124/sq. ft.
 Brevard: \$145/sq. ft.

Inventory for Sale

Woodside at Port Malabar
 Palm Bay
 0%%

Brevard

Avg. Time to Close Over Last 12 Months

Woodside at Port Malabar: 38 days
 Palm Bay: 86 days
 Brevard: 37 days