

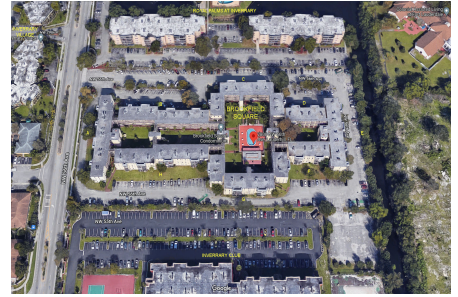
Brookfield Square

2800 NW 56 Ave, Lauderdale, FL, Broward 33313

Building Information

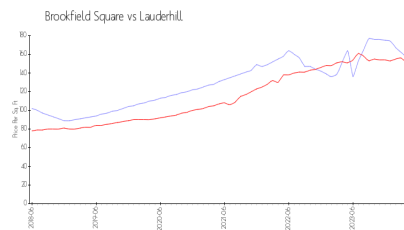
Number of units:	200
Number of active listings for rent:	3
Number of active listings for sale:	14
Building inventory for sale:	7%
Number of sales over the last 12 months:	9
Number of sales over the last 6 months:	3
Number of sales over the last 3 months:	1

Brookfield Square Condominium
Address: 2800 NW 56th Ave,
Lauderhill, FL 33313
Phone: +1 954-714-0010

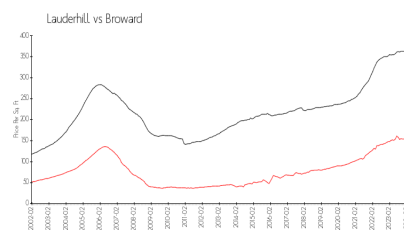


Built in 1979 - 200 units - 4 floors

Market Information



Brookfield Square: \$157/sq. ft.
Lauderhill: \$151/sq. ft.



Lauderhill: \$151/sq. ft.
Broward: \$348/sq. ft.

Inventory for Sale

Brookfield Square	7%
Lauderhill	4%
Broward	3%

Avg. Time to Close Over Last 12 Months

Brookfield Square	86 days
Lauderhill	75 days
Broward	66 days