

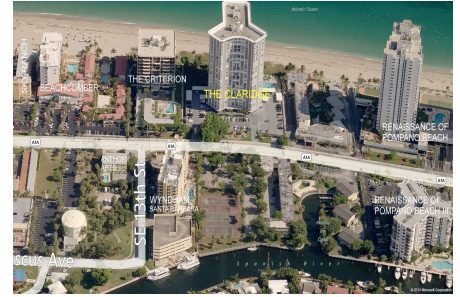
Claridge

1340 S Ocean Blvd, Pompano Beach, FL, Broward 33062

Building Information

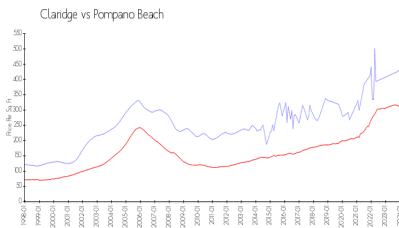
Number of units:	198
Number of active listings for rent:	0
Number of active listings for sale:	5
Building inventory for sale:	2%
Number of sales over the last 12 months:	7
Number of sales over the last 6 months:	5
Number of sales over the last 3 months:	4

Claridge
1340 S Ocean Boulevard
Pompano Beach, FL 33062-6904
(954) 943-7882

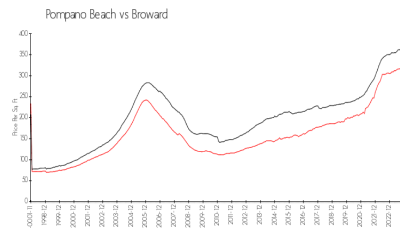


Built in 1973 - 198 units - 24 floors

Market Information



Claridge: \$436/sq. ft.
Pompano Beach: \$300/sq. ft.



Pompano Beach: \$300/sq. ft.
Broward: \$348/sq. ft.

Inventory for Sale

Claridge	2%
Pompano Beach	3%
Broward	3%

Avg. Time to Close Over Last 12 Months

Claridge	97 days
Pompano Beach	72 days
Broward	66 days