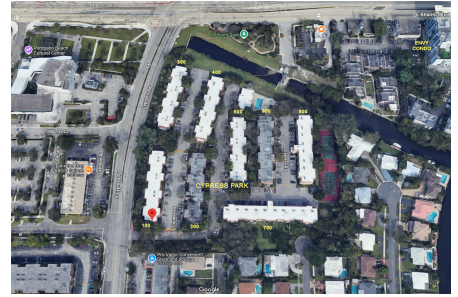


# Cypress Park

126-140 S Cypress Rd, Pompano Beach, FL, Broward 33060

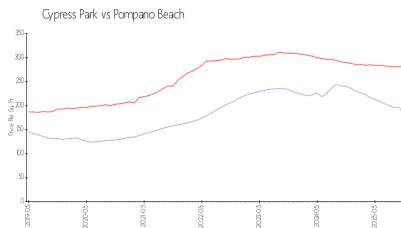
## Building Information

|  |     |
|--|-----|
| Number of units:                         | 150 |
| Number of active listings for rent:      | 2   |
| Number of active listings for sale:      | 6   |
| Building inventory for sale:             | 4%  |
| Number of sales over the last 12 months: | 2   |
| Number of sales over the last 6 months:  | 2   |
| Number of sales over the last 3 months:  | 2   |
| Cypress Park Condominium                 |     |
| 140 S Cypress Rd                         |     |
| Pompano Beach, FL 33060                  |     |
| (954) 782-1884                           |     |
| <a href="https://">https://</a>          |     |

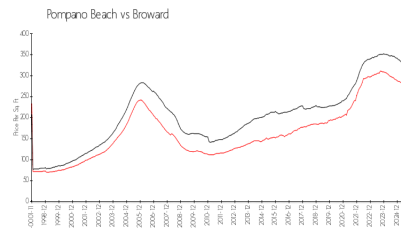


Built in 1974/1979 - 150 units - 3 floors

## Market Information



|                |               |
|----------------|---------------|
| Cypress Park:  | \$179/sq. ft. |
| Pompano Beach: | \$284/sq. ft. |



|                |               |
|----------------|---------------|
| Pompano Beach: | \$284/sq. ft. |
| Broward:       | \$311/sq. ft. |

## Inventory for Sale

|               |    |
|---------------|----|
| Cypress Park  | 4% |
| Pompano Beach | 3% |
| Broward       | 4% |

## Avg. Time to Close Over Last 12 Months

|               |          |
|---------------|----------|
| Cypress Park  | 105 days |
| Pompano Beach | 87 days  |
| Broward       | 87 days  |