

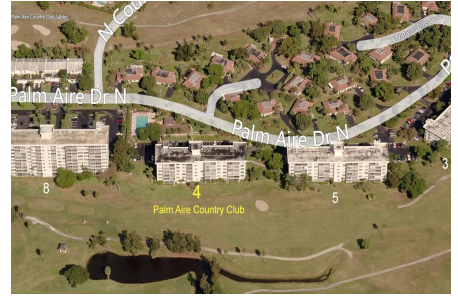
Palm Aire 4

3000 N Palm Aire Dr, Pompano Beach, FL, Broward 33069

Building Information

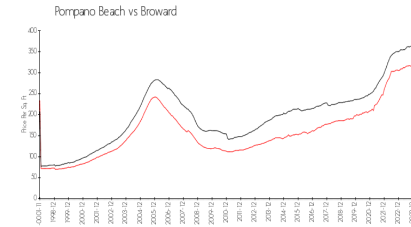
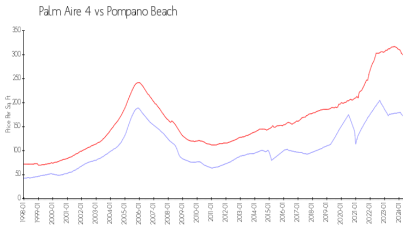
Number of units:	42
Number of active listings for rent:	0
Number of active listings for sale:	7
Building inventory for sale:	16%
Number of sales over the last 12 months:	2
Number of sales over the last 6 months:	1
Number of sales over the last 3 months:	1

Mwi/Campbell Management Co, Palm Aire Country Club Condominium Association
 3500 Gateway Drive # 202
 Pompano Beach, FL 33069-4870
 (954) 968-4481



Built in 1969 - 42 units - 6 floors

Market Information



Palm Aire 4: \$173/sq. ft.
 Pompano Beach: \$300/sq. ft.

Pompano Beach: \$300/sq. ft.
 Broward: \$348/sq. ft.

Inventory for Sale

Palm Aire 4	16%
Pompano Beach	3%
Broward	3%

Avg. Time to Close Over Last 12 Months

Palm Aire 4	54 days
Pompano Beach	72 days
Broward	67 days