

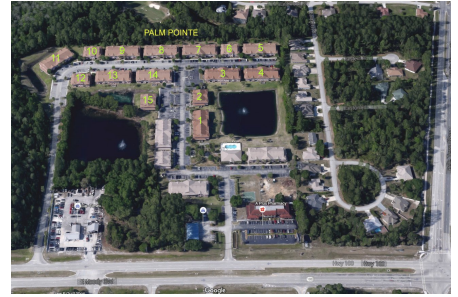
Palm Pointe

4600 E Moody Blvd, Bunnell, FL, Flagler 32110

Building Information

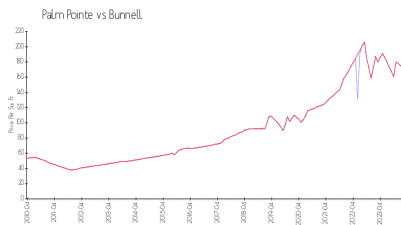
Number of units:	200
Number of active listings for rent:	0
Number of active listings for sale:	4
Building inventory for sale:	2%
Number of sales over the last 12 months:	7
Number of sales over the last 6 months:	3
Number of sales over the last 3 months:	0

Palm Pointe
Property Management Company
Address: 2275 FL-100,
Bunnell, FL 32110,
Phone: 386-437-3787
<http://www.palmpointe.com/html/index.html>

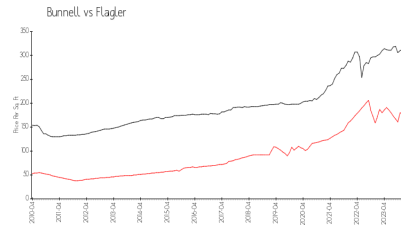


Built in 2005 - 200 units - 2 floors

Market Information



Palm Pointe: \$168/sq. ft.
Bunnell: \$168/sq. ft.



Bunnell: \$168/sq. ft.
Flagler: \$347/sq. ft.

Inventory for Sale

Palm Pointe	2%
Bunnell	2%
Flagler	4%

Avg. Time to Close Over Last 12 Months

Palm Pointe	42 days
Bunnell	42 days
Flagler	65 days