

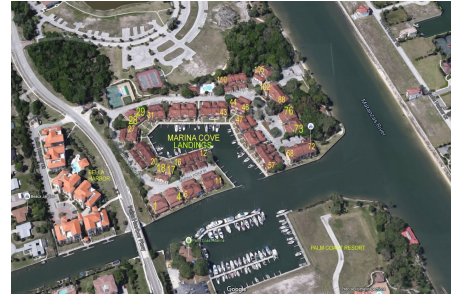
Marina Cove Landings

1 Marina Point Pl, Palm Coast, FL, Flagler 32137

Building Information

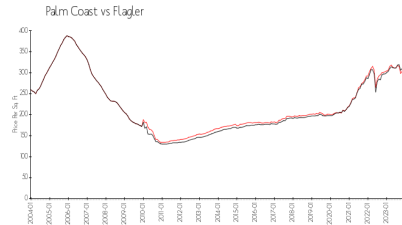
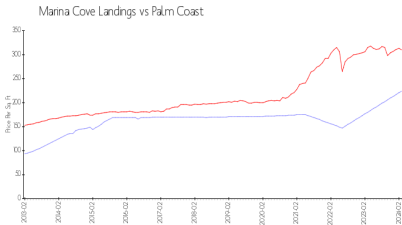
Number of units:	12
Number of active listings for rent:	0
Number of active listings for sale:	1
Building inventory for sale:	8%
Number of sales over the last 12 months:	0
Number of sales over the last 6 months:	0
Number of sales over the last 3 months:	0

Marina Cove Landings
 Condominium Association Inc
 1410 Palm Coast Pkwy Nw
 Palm Coast, Florida 32137-4721



Built in 2004 - 12 units - 2 floors

Market Information



Marina Cove Landings: \$224/sq. ft.
 Palm Coast: \$310/sq. ft.

Palm Coast: \$310/sq. ft.
 Flagler: \$347/sq. ft.

Inventory for Sale

Marina Cove Landings	8%
Palm Coast	4%
Flagler	4%

Avg. Time to Close Over Last 12 Months

Marina Cove Landings	81 days
Palm Coast	61 days
Flagler	65 days