

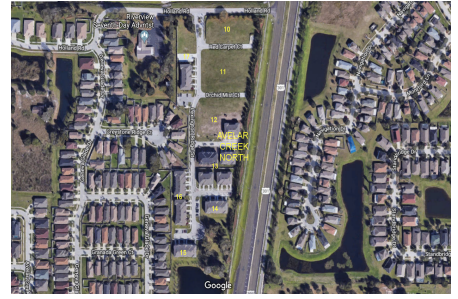
Avelar Creek North

12611-12760 Lexington Ridge St, Riverview, FL, Hillsborough 33578

Building Information

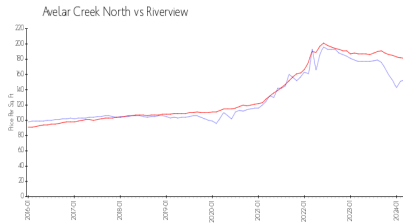
Number of units: 105
 Number of active listings for rent: 0
 Number of active listings for sale: 0
 Building inventory for sale:
 Number of sales over the last 12 months: 0%
 Number of sales over the last 6 months: 4
 Number of sales over the last 3 months: 2

Avelar Creek North Homeowners
 The Melrose Management Partnership
 3527 Palm Harbor Blvd
 Palm Harbor, FL 34683
 727-787-3461 (phone)
 727-787-3423 (fax)
<https://melrosecorporation.com/avelar-creek-north/>

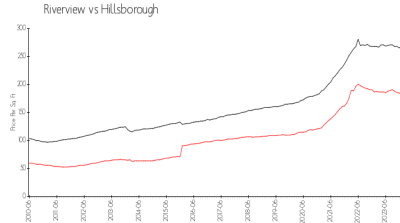


Built in 2016 - 105 units - 2 floors

Market Information



Avelar Creek North: \$153/sq. ft.
 Riverview: \$181/sq. ft.



Riverview: \$181/sq. ft.
 Hillsborough: \$247/sq. ft.

Inventory for Sale

Avelar Creek North
 Riverview
 0%

Hillsborough

Avg. Time to Close Over Last 12 Months

Avelar Creek North 32 days
 Riverview 45 days
 Hillsborough 43 days