

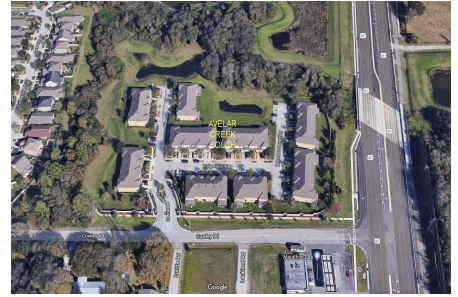
Avelar Creek South

10402-10424 Tulip Field Wy, Riverview, FL, Hillsborough 33578

Building Information

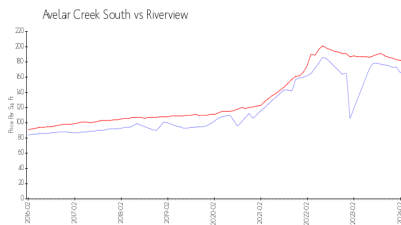
Number of units:	48
Number of active listings for rent:	0
Number of active listings for sale:	0
Building inventory for sale:	
Number of sales over the last 12 months:	0%
Number of sales over the last 6 months:	0
Number of sales over the last 3 months:	0

Avelar Creek South Homeowners
The Melrose Management Partnership
3527 Palm Harbor Blvd
Palm Harbor, FL 34683
727-787-3461 (phone)
<https://melrosecorporation.com/avelar-creek-south/>

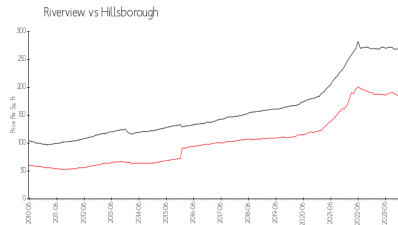


Built in 2012 - 48 units - 2 floors

Market Information



Avelar Creek South: \$168/sq. ft.
Riverview: \$181/sq. ft.



Riverview: \$181/sq. ft.
Hillsborough: \$247/sq. ft.

Inventory for Sale

Avelar Creek South
Riverview
0%%

Hillsborough

Avg. Time to Close Over Last 12 Months

Avelar Creek South	35 days
Riverview	47 days
Hillsborough	44 days