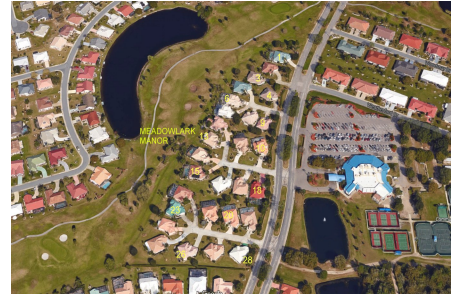


# Meadowlark Manor

1809-1949 S Pebble Beach Blvd, Sun City Center, FL, Hillsborough 33573

## Building Information

Number of units: 28  
 Number of active listings for rent: 1  
 Number of active listings for sale: 0  
 Building inventory for sale:  
 Number of sales over the last 12 months: 0%  
 Number of sales over the last 6 months: 1  
 Number of sales over the last 3 months: 0



Built in 1999 - 28 units - 1 floor

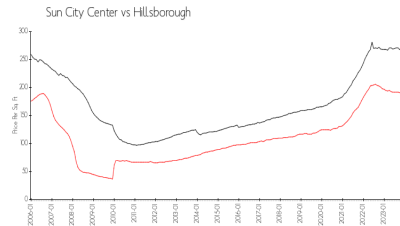
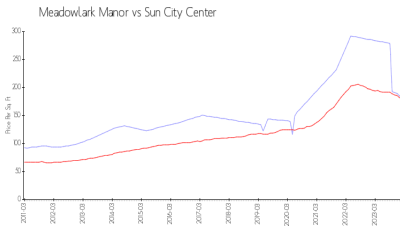
## Sun City Center Community Association

1009 North Pebble Beach Blv  
 Sun City Center  
 Ph: 813-633-3500  
 URL: <http://www.suncitycenter.org/association.html>

## Kings Point Community

1904 Clubhouse Dr  
 Sun City Center  
 Ph: 813-642-8790  
 URL: <http://kpscc.com/>

## Market Information



Meadowlark Manor: \$187/sq. ft.  
 Sun City Center: \$181/sq. ft.

Sun City Center: \$181/sq. ft.  
 Hillsborough: \$247/sq. ft.

## Inventory for Sale

Meadowlark Manor  
 Sun City Center  
 0%%

Hillsborough

## Avg. Time to Close Over Last 12 Months

Meadowlark Manor 97 days  
 Sun City Center 52 days  
 Hillsborough 43 days