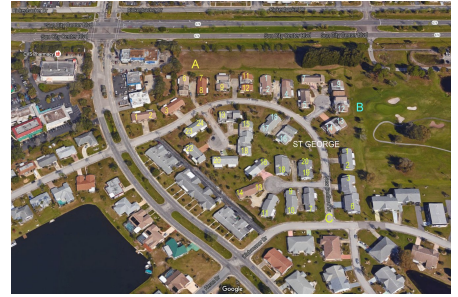


St George A-B&C

1301-1359 New Bedford Dr, Sun City Center, FL, Hillsborough 33573

Building Information

Number of units: 62
 Number of active listings for rent: 0
 Number of active listings for sale: 2
 Building inventory for sale: 3%
 Number of sales over the last 12 months: 7
 Number of sales over the last 6 months: 3
 Number of sales over the last 3 months: 3



Built in 1977 - 62 units - 1 floor

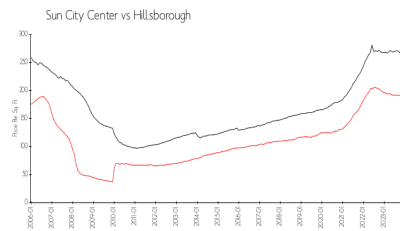
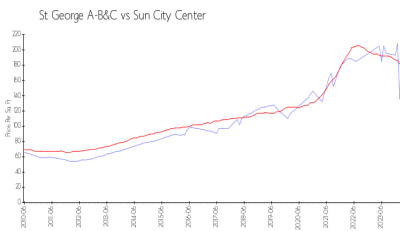
Sun City Center Community Association

1009 North Pebble Beach Blv
 Sun City Center
 Ph: 813-633-3500
 URL: <http://www.suncitycenter.org/association.html>

Kings Point Community

1904 Clubhouse Dr
 Sun City Center
 Ph: 813-642-8790
 URL: <http://kpscc.com/>

Market Information



St George A-B&C: \$209/sq. ft.
 Sun City Center: \$181/sq. ft.

Sun City Center: \$181/sq. ft.
 Hillsborough: \$247/sq. ft.

Inventory for Sale

St George A-B&C 3%
 Sun City Center 3%
 Hillsborough 2%

Avg. Time to Close Over Last 12 Months

St George A-B&C 48 days
 Sun City Center 52 days
 Hillsborough 44 days