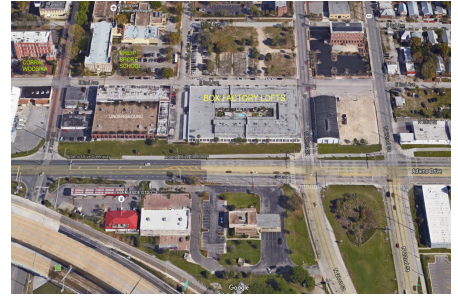


Box Factory Lofts

2001 2 E Ave, Tampa, FL, Hillsborough 33605

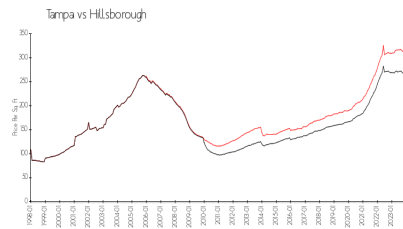
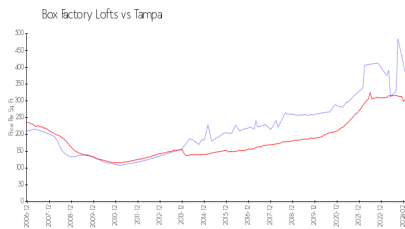
Building Information

Number of units:	53
Number of active listings for rent:	0
Number of active listings for sale:	2
Building inventory for sale:	3%
Number of sales over the last 12 months:	4
Number of sales over the last 6 months:	2
Number of sales over the last 3 months:	1



Built in 2006 - 53 units - 2 floors

Market Information



Box Factory Lofts: \$386/sq. ft.
Tampa: \$306/sq. ft.

Tampa: \$306/sq. ft.
Hillsborough: \$247/sq. ft.

Inventory for Sale

Box Factory Lofts	3%
Tampa	2%
Hillsborough	2%

Avg. Time to Close Over Last 12 Months

Box Factory Lofts	4 days
Tampa	42 days
Hillsborough	44 days