

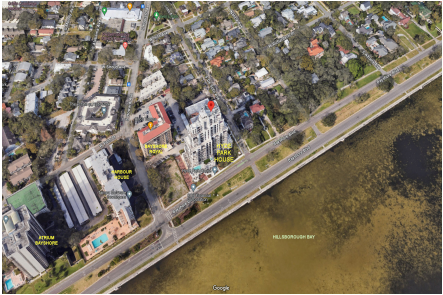
Hyde Park House

2103 Bayshore Blvd, Tampa, FL, Hillsborough 33606

Building Information

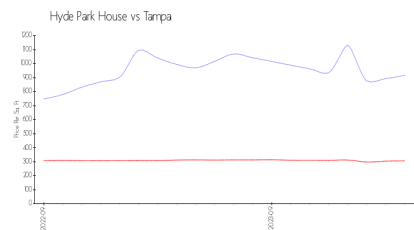
Number of units:	70
Number of active listings for rent:	1
Number of active listings for sale:	3
Building inventory for sale:	4%
Number of sales over the last 12 months:	6
Number of sales over the last 6 months:	4
Number of sales over the last 3 months:	2

Hyde Park House
Address: 2103 Bayshore Blvd,
Tampa, FL 33606,
Phone: +1 813-861-2760

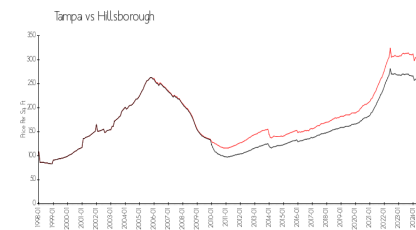


Built in 2022 - 70 units - 22 floors

Market Information



Hyde Park House: \$917/sq. ft.
Tampa: \$306/sq. ft.



Tampa: \$306/sq. ft.
Hillsborough: \$249/sq. ft.

Inventory for Sale

Hyde Park House	4%
Tampa	2%
Hillsborough	2%

Avg. Time to Close Over Last 12 Months

Hyde Park House	142 days
Tampa	42 days
Hillsborough	44 days