

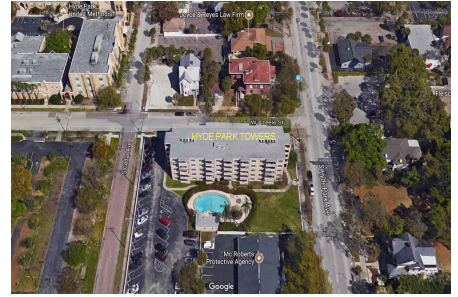
# Hyde Park Towers

406 W Azeele St, Tampa, FL, Hillsborough 33606

## Building Information

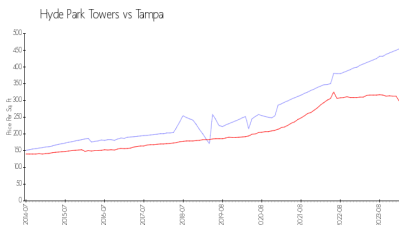
Number of units:	40
Number of active listings for rent:	2
Number of active listings for sale:	1
Building inventory for sale:	2%
Number of sales over the last 12 months:	2
Number of sales over the last 6 months:	0
Number of sales over the last 3 months:	0

HYDE PARK TOWERS  
CONDOMINIUM ASSOCIATION, INC.  
C/O Condominium Associates  
777 S Harbour Island Blvd, Suite 270  
Tampa, FL 33602  
(813) 209-9300

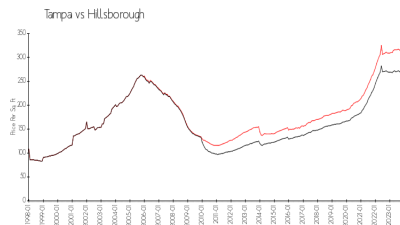


Built in 1963 - 40 units - 5 floors

## Market Information



Hyde Park Towers: \$459/sq. ft.  
Tampa: \$306/sq. ft.



Tampa: \$306/sq. ft.  
Hillsborough: \$247/sq. ft.

## Inventory for Sale

Hyde Park Towers	2%
Tampa	2%
Hillsborough	2%

## Avg. Time to Close Over Last 12 Months

Hyde Park Towers	41 days
Tampa	42 days
Hillsborough	44 days