

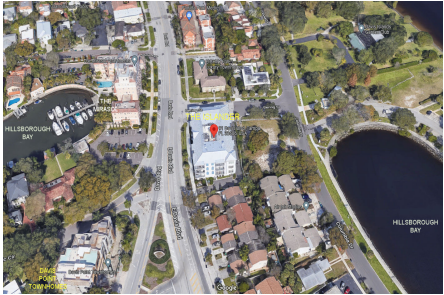
Islander (The)

91 Davis Blvd, Tampa, FL, Hillsborough 33606

Building Information

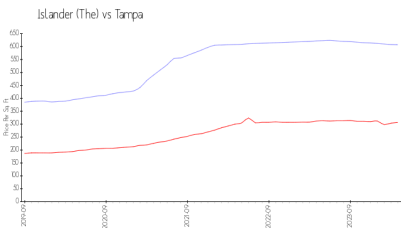
Number of units:	11
Number of active listings for rent:	0
Number of active listings for sale:	1
Building inventory for sale:	9%
Number of sales over the last 12 months:	1
Number of sales over the last 6 months:	0
Number of sales over the last 3 months:	0

THE ISLANDER
CONDOMINIUM ASSOCIATION OF TAMPA, INC.
91 Davis Blvd.
Tampa, FL33606

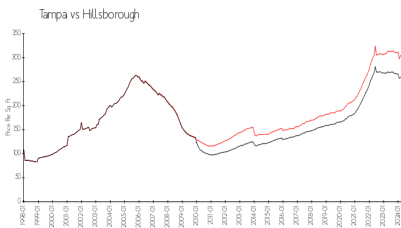


Built in 2019 - 11 units - 4 floors

Market Information



Islander (The): \$607/sq. ft.
Tampa: \$306/sq. ft.



Tampa: \$306/sq. ft.
Hillsborough: \$249/sq. ft.

Inventory for Sale

Islander (The)	9%
Tampa	2%
Hillsborough	2%

Avg. Time to Close Over Last 12 Months

Islander (The)	36 days
Tampa	42 days
Hillsborough	43 days