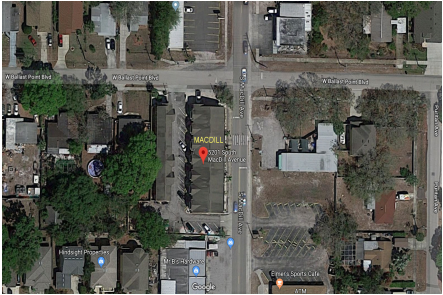


MacDill

5201 S MacDill Ave, Tampa, FL, Hillsborough 33611

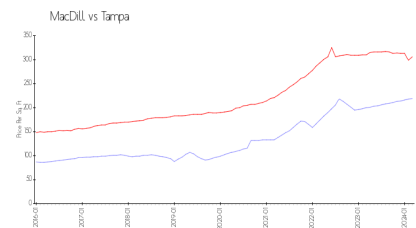
Building Information

| | |
|--|----|
| Number of units: | 20 |
| Number of active listings for rent: | 0 |
| Number of active listings for sale: | 1 |
| Building inventory for sale: | 5% |
| Number of sales over the last 12 months: | 0 |
| Number of sales over the last 6 months: | 0 |
| Number of sales over the last 3 months: | 0 |

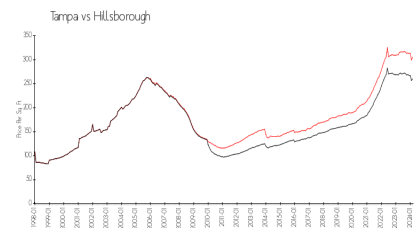


Built in 1985 - 20 units - 2 floors

Market Information



MacDill: \$219/sq. ft.
Tampa: \$306/sq. ft.



Tampa: \$306/sq. ft.
Hillsborough: \$247/sq. ft.

Inventory for Sale

| | |
|--------------|----|
| MacDill | 5% |
| Tampa | 2% |
| Hillsborough | 2% |

Avg. Time to Close Over Last 12 Months

| | |
|--------------|---------|
| MacDill | 47 days |
| Tampa | 42 days |
| Hillsborough | 44 days |