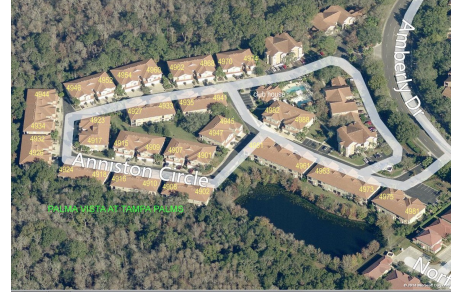


# Palma Vista at Tampa Palms

4901-4988 Anniston Cir, Tampa, FL, Hillsborough 33647

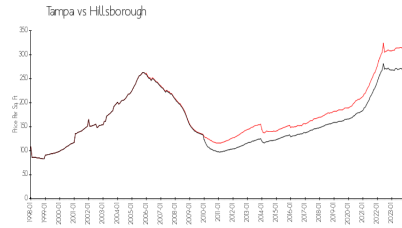
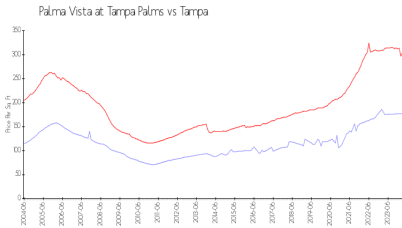
## Building Information

Number of units:	80
Number of active listings for rent:	1
Number of active listings for sale:	3
Building inventory for sale:	3%
Number of sales over the last 12 months:	0
Number of sales over the last 6 months:	0
Number of sales over the last 3 months:	0



Built in 2004 - 80 units - 2 floors

## Market Information



Palma Vista at Tampa Palms:	\$177/sq. ft.	Tampa:	\$305/sq. ft.
Tampa:	\$305/sq. ft.	Hillsborough:	\$247/sq. ft.

## Inventory for Sale

Palma Vista at Tampa Palms	3%
Tampa	2%
Hillsborough	2%

## Avg. Time to Close Over Last 12 Months

Palma Vista at Tampa Palms	3 days
Tampa	41 days
Hillsborough	43 days