

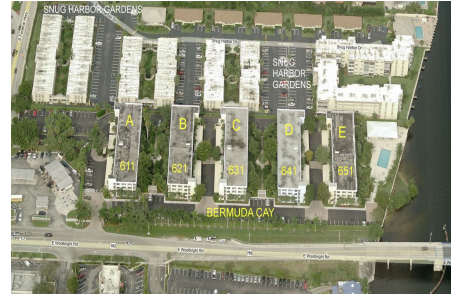
Bermuda Cay

611 E Woolbright Road, Boynton Beach, FL, Palm Beach 33435

Building Information

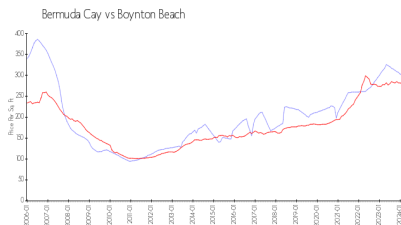
Number of units:	160
Number of active listings for rent:	0
Number of active listings for sale:	1
Building inventory for sale:	0%
Number of sales over the last 12 months:	0
Number of sales over the last 6 months:	0
Number of sales over the last 3 months:	0

Bermuda Cay On The Intracoastal
651 E Woolbright Road E108
Boynton Beach, FL33435
(561) 738-4711
<http://www.bermudacayliving.com/>

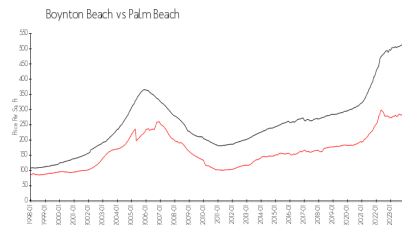


Built in 1975 - renovated in 2006 - 160 units - 4 floors

Market Information



Bermuda Cay: \$295/sq. ft.
Boynton Beach: \$276/sq. ft.



Boynton Beach: \$276/sq. ft.
Palm Beach: \$468/sq. ft.

Inventory for Sale

Bermuda Cay	0%
Boynton Beach	2%
Palm Beach	3%

Avg. Time to Close Over Last 12 Months

Bermuda Cay	2 days
Boynton Beach	48 days
Palm Beach	56 days