

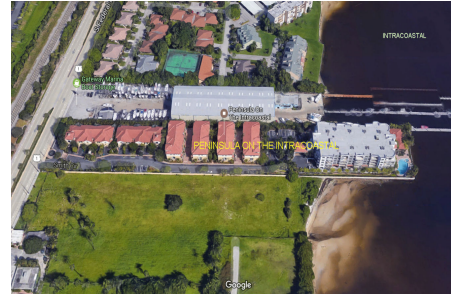
Peninsula on the Intracoastal

2670-2700 N Federal Hwy, Boynton Beach, FL, Palm Beach 33435

Building Information

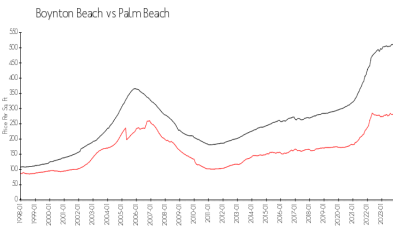
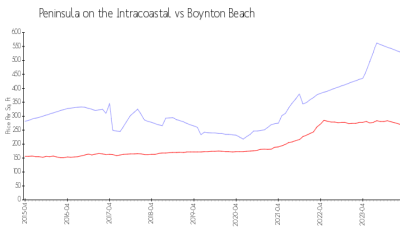
Number of units: 70
 Number of active listings for rent: 0
 Number of active listings for sale: 4
 Building inventory for sale: 5%
 Number of sales over the last 12 months: 4
 Number of sales over the last 6 months: 2
 Number of sales over the last 3 months: 2

Peninsula on the Intracoastal
 561-740-3400
<http://peninsulaboynnton.com/>



Built in 2011 - 70 units - 5 floors

Market Information



Peninsula on the Intracoastal: \$517/sq. ft.
 Boynton Beach: \$270/sq. ft.

Boynton Beach: \$270/sq. ft.
 Palm Beach: \$454/sq. ft.

Inventory for Sale

Peninsula on the Intracoastal: 5%
 Boynton Beach: 2%
 Palm Beach: 3%

Avg. Time to Close Over Last 12 Months

Peninsula on the Intracoastal: 8 days
 Boynton Beach: 47 days
 Palm Beach: 56 days