

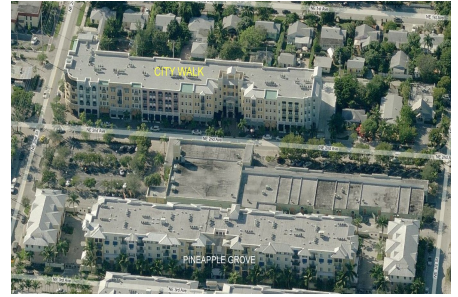
City Walk Pineapple Grove

200 NE 2 Av, Delray Beach, FL, Palm Beach 33444

Building Information

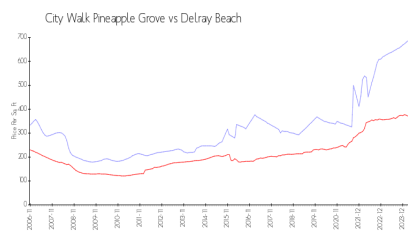
Number of units:	40
Number of active listings for rent:	2
Number of active listings for sale:	2
Building inventory for sale:	5%
Number of sales over the last 12 months:	1
Number of sales over the last 6 months:	1
Number of sales over the last 3 months:	0

City Walk At Pineapple Grove
200 NE 2nd Ave, Delray Beach, FL 33444
(561) 266-5970

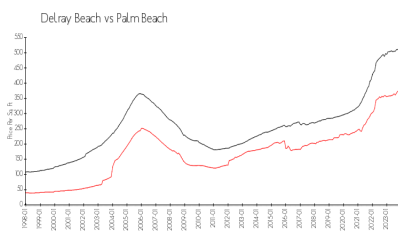


Built in 2006 - 40 units - 4 floors

Market Information



City Walk Pineapple Grove: \$672/sq. ft.
Delray Beach: \$227/sq. ft.



Delray Beach: \$227/sq. ft.
Palm Beach: \$454/sq. ft.

Inventory for Sale

City Walk Pineapple Grove	5%
Delray Beach	2%
Palm Beach	3%

Avg. Time to Close Over Last 12 Months

City Walk Pineapple Grove	88 days
Delray Beach	53 days
Palm Beach	56 days