

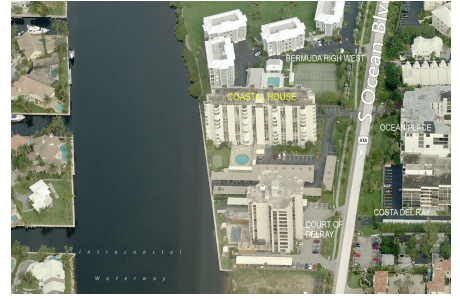
Coastal House

2200 S Ocean Blvd, Delray Beach, FL, Palm Beach 33483

Building Information

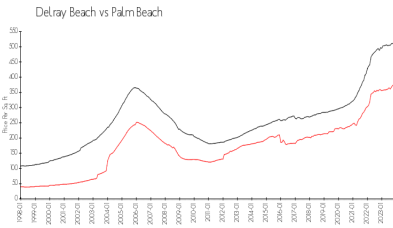
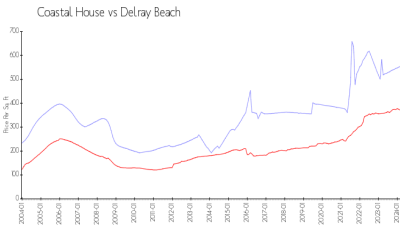
Number of units:	85
Number of active listings for rent:	0
Number of active listings for sale:	7
Building inventory for sale:	8%
Number of sales over the last 12 months:	5
Number of sales over the last 6 months:	1
Number of sales over the last 3 months:	1

Coastal House Association Inc,
 2200 South Ocean Boulevard
 Delray Beach, FL 33483
 Phone: (561) 278-5979
<http://2200coastalhouse.com/>



Built in 1970 - 85 units - 11 floors

Market Information



Coastal House: \$540/sq. ft.
 Delray Beach: \$227/sq. ft.

Delray Beach: \$227/sq. ft.
 Palm Beach: \$453/sq. ft.

Inventory for Sale

Coastal House	8%
Delray Beach	2%
Palm Beach	3%

Avg. Time to Close Over Last 12 Months

Coastal House	86 days
Delray Beach	53 days
Palm Beach	56 days