

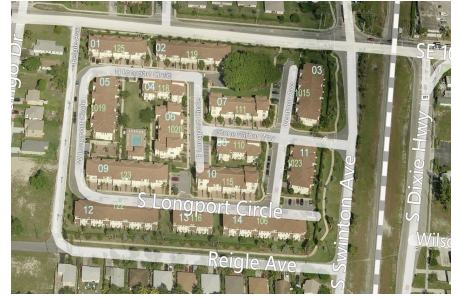
Village at Swinton Square

125 N Longport Cir, Delray Beach, FL, Palm Beach 33483

Building Information

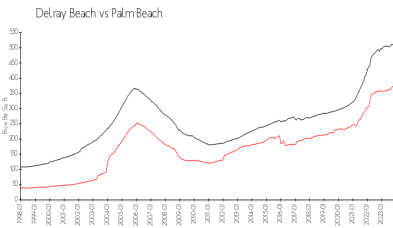
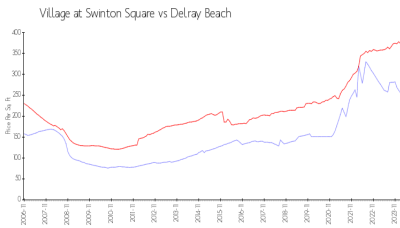
Number of units: 100
 Number of active listings for rent: 1
 Number of active listings for sale: 4
 Building inventory for sale: 4%
 Number of sales over the last 12 months: 8
 Number of sales over the last 6 months: 5
 Number of sales over the last 3 months: 3

Village At Swinton Square
 Condominium Association, Inc.
<http://swintonsquare.com/>



Built in 2006 - 100 units - 2 floors

Market Information



Village at Swinton Square: \$236/sq. ft.
 Delray Beach: \$227/sq. ft.

Delray Beach: \$227/sq. ft.
 Palm Beach: \$453/sq. ft.

Inventory for Sale

Village at Swinton Square: 4%
 Delray Beach: 2%
 Palm Beach: 3%

Avg. Time to Close Over Last 12 Months

Village at Swinton Square: 61 days
 Delray Beach: 53 days
 Palm Beach: 56 days