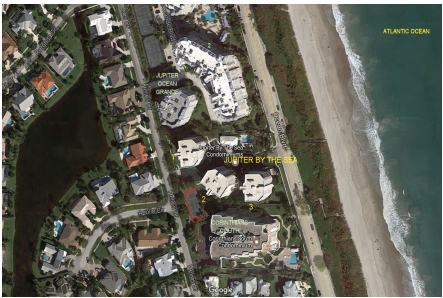


# Jupiter by the Sea 1-2&3

1660 S Hwy A1A, Jupiter, FL, Palm Beach 33477

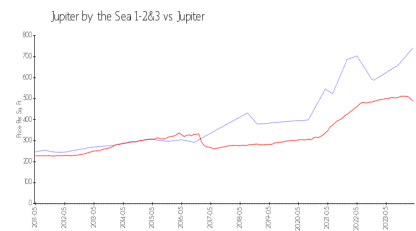
## Building Information

Number of units:	36
Number of active listings for rent:	0
Number of active listings for sale:	1
Building inventory for sale:	2%
Number of sales over the last 12 months:	1
Number of sales over the last 6 months:	0
Number of sales over the last 3 months:	0

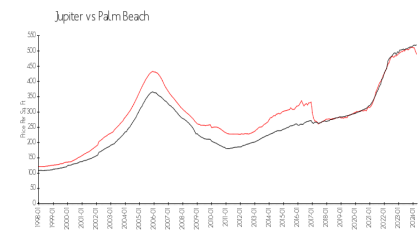


Built in 1996 - 36 units - 6 floors

## Market Information



Jupiter by the Sea 1-2&3:	\$741/sq. ft.
Jupiter:	\$489/sq. ft.



Jupiter:	\$489/sq. ft.
Palm Beach:	\$467/sq. ft.

## Inventory for Sale

Jupiter by the Sea 1-2&3	2%
Jupiter	3%
Palm Beach	3%

## Avg. Time to Close Over Last 12 Months

Jupiter by the Sea 1-2&3	53 days
Jupiter	65 days
Palm Beach	56 days