

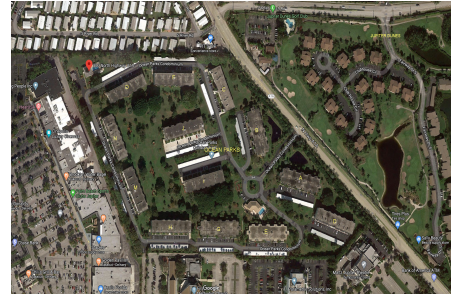
# Ocean Parks (A to O)

300 N Highway A1A, Jupiter, FL, Palm Beach 33477

## Building Information

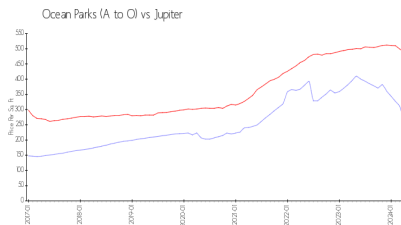
Number of units:	328
Number of active listings for rent:	5
Number of active listings for sale:	16
Building inventory for sale:	4%
Number of sales over the last 12 months:	10
Number of sales over the last 6 months:	6
Number of sales over the last 3 months:	2

Ocean Parks Office  
300 N. Ocean Blvd (Hwy. A1A)  
Jupiter, FL 33477-9510  
(561) 744-0668  
(561) 575-2874 (fax)  
<https://www.oceanparks.com/>

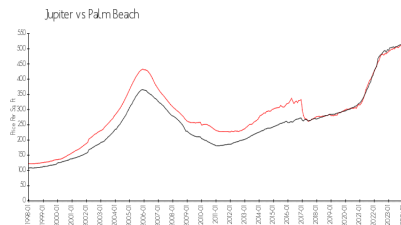


Built in 1973/1981 - 328 units - 4 floors

## Market Information



Ocean Parks (A to O): \$261/sq. ft.  
Jupiter: \$489/sq. ft.



Jupiter: \$489/sq. ft.  
Palm Beach: \$467/sq. ft.

## Inventory for Sale

Ocean Parks (A to O)	4%
Jupiter	3%
Palm Beach	3%

## Avg. Time to Close Over Last 12 Months

Ocean Parks (A to O)	73 days
Jupiter	65 days
Palm Beach	56 days