

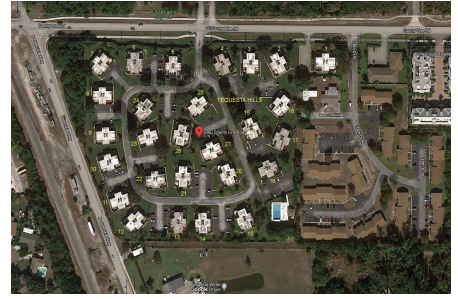
Tequesta Hills

3400 County Line Rd, Jupiter, FL, Palm Beach 33469

Building Information

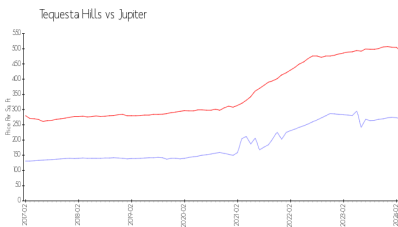
Number of units:	108
Number of active listings for rent:	3
Number of active listings for sale:	2
Building inventory for sale:	1%
Number of sales over the last 12 months:	10
Number of sales over the last 6 months:	5
Number of sales over the last 3 months:	4

Tequesta Hills
Condominium Association Inc
3900 County Line Road 25D
Jupiter, FL 33469
(561) 744-2788

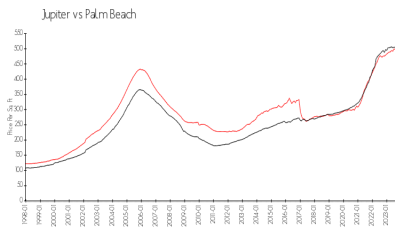


Built in 1979 - 108 units - 2 floors

Market Information



Tequesta Hills: \$256/sq. ft.
Jupiter: \$492/sq. ft.



Jupiter: \$492/sq. ft.
Palm Beach: \$453/sq. ft.

Inventory for Sale

Tequesta Hills	1%
Jupiter	3%
Palm Beach	3%

Avg. Time to Close Over Last 12 Months

Tequesta Hills	49 days
Jupiter	65 days
Palm Beach	56 days