

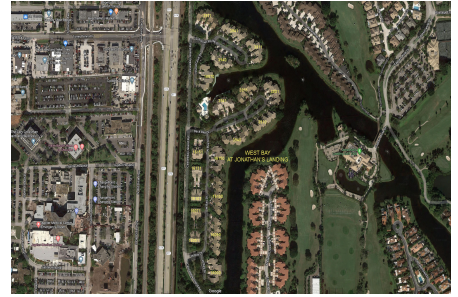
West Bay at Jonathan's Landing

3911-3971 Schooner Pointe Dr, Jupiter, FL, Palm Beach 33477

Building Information

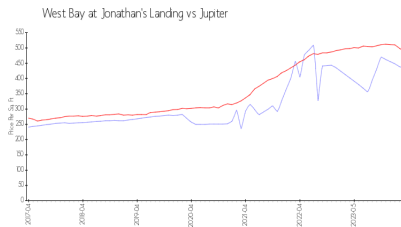
Number of units:	130
Number of active listings for rent:	1
Number of active listings for sale:	2
Building inventory for sale:	1%
Number of sales over the last 12 months:	8
Number of sales over the last 6 months:	6
Number of sales over the last 3 months:	5

Jonathan's Landing POA
3755 Barrow Island Road
Jupiter, FL 33477
Office Phone: 561-743-2032
Fax: 561-743-2062
Email: admin@jlpoa.com
<https://jonathanslandingpoa.com/the-villages/west-bay>

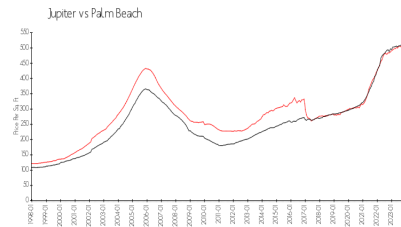


Built in 1989/1995 - 130 units - 2 floors

Market Information



West Bay at Jonathan's Landing: \$433/sq. ft.
Jupiter: \$489/sq. ft.



Jupiter: \$489/sq. ft.
Palm Beach: \$467/sq. ft.

Inventory for Sale

West Bay at Jonathan's Landing	1%
Jupiter	3%
Palm Beach	3%

Avg. Time to Close Over Last 12 Months

West Bay at Jonathan's Landing	55 days
Jupiter	65 days
Palm Beach	56 days