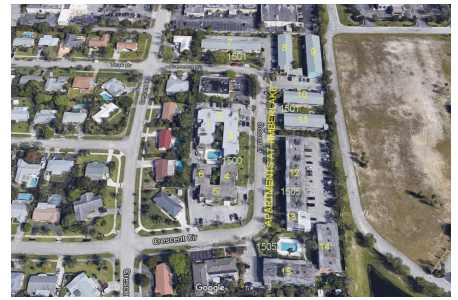


# Apartments at Timber Lake

1500 Crescent Cir, Lake Park, FL, Palm Beach 33403

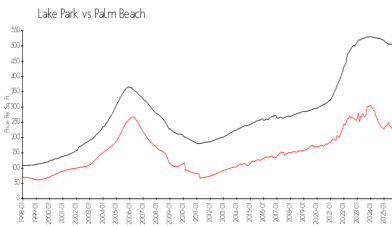
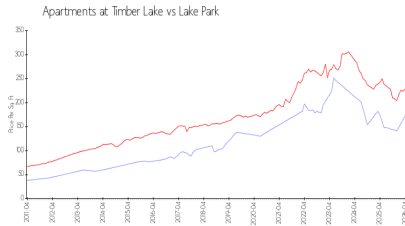
## Building Information

Number of units: 118  
 Number of active listings for rent: 3  
 Number of active listings for sale: 4  
 Building inventory for sale: 3%  
 Number of sales over the last 12 months: 8  
 Number of sales over the last 6 months: 6  
 Number of sales over the last 3 months: 0



Built in 1967 - 118 units - 2 floors

## Market Information



Apartments at Timber Lake:	\$172/sq. ft.	Lake Park:	\$229/sq. ft.
Lake Park:	\$229/sq. ft.	Palm Beach:	\$457/sq. ft.

## Inventory for Sale

Apartments at Timber Lake: 3%  
 Lake Park: 3%  
 Palm Beach: 3%

## Avg. Time to Close Over Last 12 Months

Apartments at Timber Lake: 30 days  
 Lake Park: 70 days  
 Palm Beach: 77 days