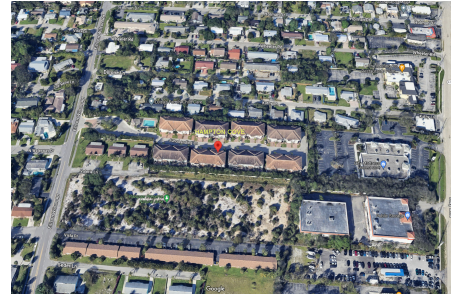


Hampton Cove

1843-1951 Juno Landing Ln, North Palm Beach, FL, Palm Beach 33408

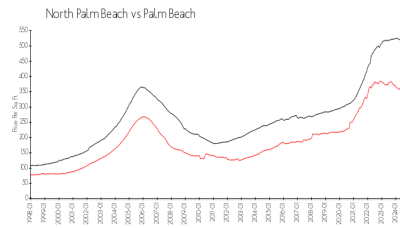
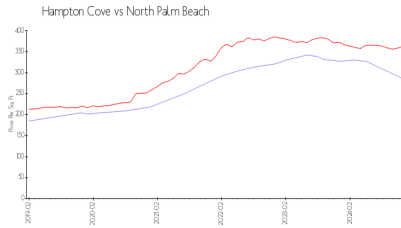
Building Information

Number of units:	32
Number of active listings for rent:	1
Number of active listings for sale:	1
Building inventory for sale:	3%
Number of sales over the last 12 months:	1
Number of sales over the last 6 months:	0
Number of sales over the last 3 months:	0



Built in 2018 - 32 units - 2 floors

Market Information



Hampton Cove: \$284/sq. ft.
North Palm Beach: \$363/sq. ft.

North Palm Beach: \$363/sq. ft.
Palm Beach: \$465/sq. ft.

Inventory for Sale

Hampton Cove	3%
North Palm Beach	6%
Palm Beach	4%

Avg. Time to Close Over Last 12 Months

Hampton Cove	108 days
North Palm Beach	72 days
Palm Beach	62 days