

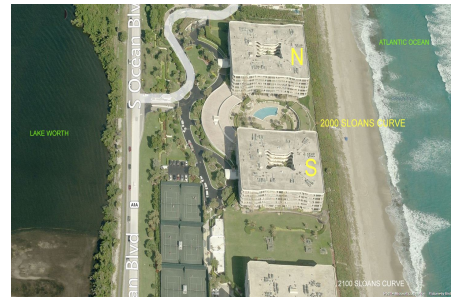
2000 at Sloans Curve

2000 S Ocean Blvd, Palm Beach, FL, Palm Beach 33480

Building Information

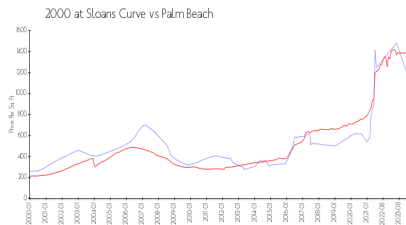
Number of units: 95
 Number of active listings for rent: 1
 Number of active listings for sale: 16
 Building inventory for sale: 16%
 Number of sales over the last 12 months: 15
 Number of sales over the last 6 months: 7
 Number of sales over the last 3 months: 5

The Residences At Sloans Curve Inc,
 18 Sloans Curve Drive
 Palm Beach, FL 33480
 Phone: (561) 582-1203

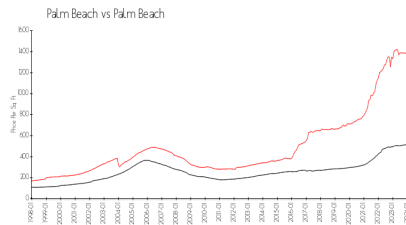


Built in 1981 - 95 units - 5 floors

Market Information



2000 at Sloans Curve: \$1128/sq. ft.
 Palm Beach: \$1397/sq. ft.



Palm Beach: \$1397/sq. ft.
 Palm Beach: \$453/sq. ft.

Inventory for Sale

2000 at Sloans Curve 16%
 Palm Beach 4%
 Palm Beach 3%

Avg. Time to Close Over Last 12 Months

2000 at Sloans Curve 5 days
 Palm Beach 80 days
 Palm Beach 55 days