

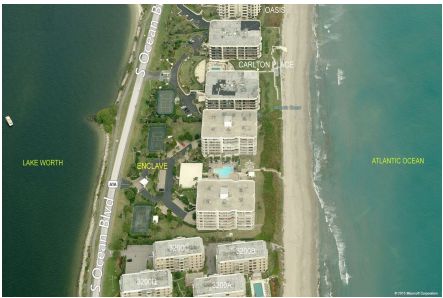
# Enclave of Palm Beach

3170 S Ocean Blvd, Palm Beach, FL, Palm Beach 33480

## Building Information

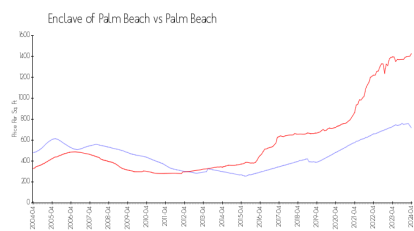
Number of units:	72
Number of active listings for rent:	0
Number of active listings for sale:	5
Building inventory for sale:	6%
Number of sales over the last 12 months:	4
Number of sales over the last 6 months:	1
Number of sales over the last 3 months:	0

Enclave of Palm Beach Condominium Association Inc,  
3170 S Ocean Blvd, Palm Beach, FL 33480  
Phone: (561) 582-1100

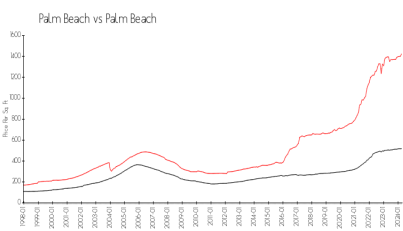


Built in 1985 - 72 units - 7 floors

## Market Information



Enclave of Palm Beach:	\$716/sq. ft.
Palm Beach:	\$1428/sq. ft.



Palm Beach:	\$1428/sq. ft.
Palm Beach:	\$468/sq. ft.

## Inventory for Sale

Enclave of Palm Beach	6%
Palm Beach	4%
Palm Beach	3%

## Avg. Time to Close Over Last 12 Months

Enclave of Palm Beach	n/a
Palm Beach	80 days
Palm Beach	56 days