

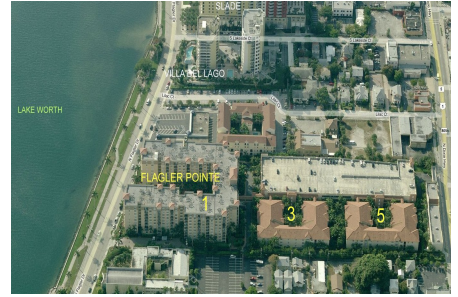
Flagler Pointe

1805 N Flagler Drive, West Palm Beach, FL, Palm Beach 33407

Building Information

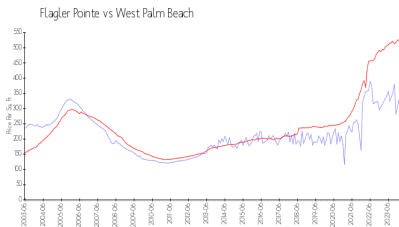
Number of units:	400
Number of active listings for rent:	25
Number of active listings for sale:	25
Building inventory for sale:	6%
Number of sales over the last 12 months:	23
Number of sales over the last 6 months:	13
Number of sales over the last 3 months:	6

Flagler Pointe Condominium Association of
West Palm Beach, Inc
c/o Castle Management, LLC
1801 North Flagler Drive
West Palm Beach, FL 33407
Phone: (561) 822-9970
Concierge: (561) 833-7024
<http://flaglerpointe.us/Management-Contacts~301897~20085.htm>

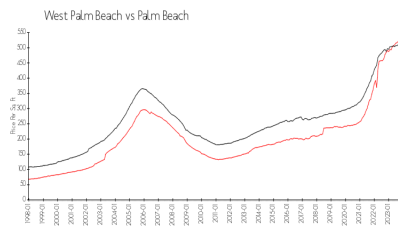


Built in 2003 - 400 units - 9 floors

Market Information



Flagler Pointe: \$177/sq. ft.
West Palm Beach: \$512/sq. ft.



West Palm Beach: \$512/sq. ft.
Palm Beach: \$467/sq. ft.

Inventory for Sale

Flagler Pointe	6%
West Palm Beach	3%
Palm Beach	3%

Avg. Time to Close Over Last 12 Months

Flagler Pointe	63 days
West Palm Beach	52 days
Palm Beach	56 days