

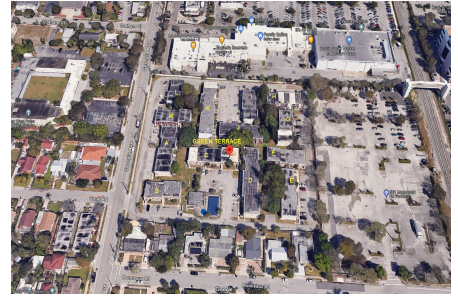
Green Terrace

2800 Georgia Ave, West Palm Beach, FL, Palm Beach 33405

Building Information

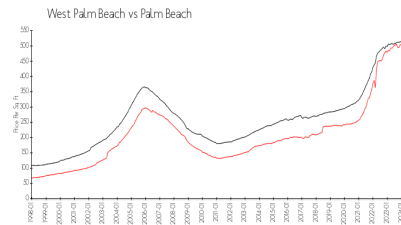
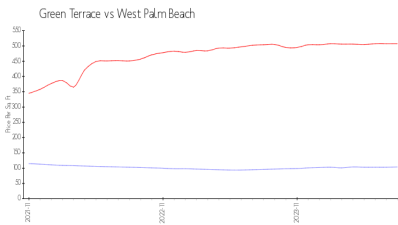
Number of units: 84
Number of active listings for rent: 1
Number of active listings for sale: 0
Building inventory for sale:
Number of sales over the last 12 months: 0%%
Number of sales over the last 6 months: 0
Number of sales over the last 3 months: 0

Green Terrace Condominium Association
2800 Georgia Avenue
West Palm Beach, FL 33405
(561) 615-0123



Built in 1983 - 84 units - 2 floors

Market Information



Green Terrace: \$104/sq. ft.
West Palm Beach: \$507/sq. ft.

West Palm Beach: \$507/sq. ft.
Palm Beach: \$472/sq. ft.

Inventory for Sale

Green Terrace
West Palm Beach
0%%

Palm Beach

Avg. Time to Close Over Last 12 Months

Green Terrace 42 days
West Palm Beach 55 days
Palm Beach 58 days