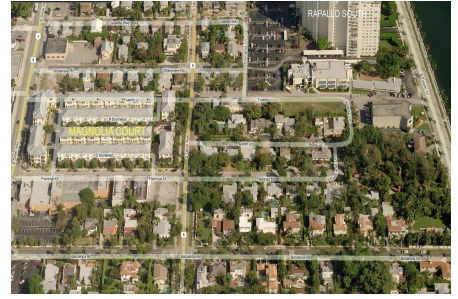


# Magnolia & Annex

303-351 Flamingo Dr, West Palm Beach, FL, Palm Beach 33401

## Building Information

Number of units:	70
Number of active listings for rent:	2
Number of active listings for sale:	2
Building inventory for sale:	2%
Number of sales over the last 12 months:	2
Number of sales over the last 6 months:	1
Number of sales over the last 3 months:	1



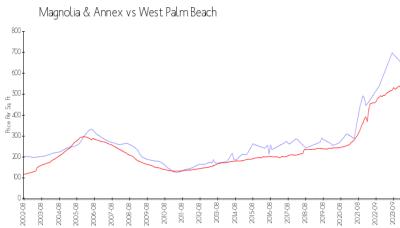
Built in 2002 - 70 units - 3 floors

Magnolia Court Homeowners Association, Inc 2328 S Congress Avenue # 1  
West Palm Beach, FL33406

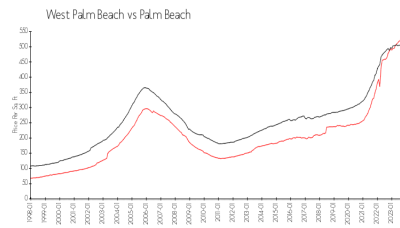
(561) 355-4497

The Annex Condominium Association is managed by King's Management Services, Inc.  
(561) 627-0480

## Market Information



Magnolia & Annex: \$626/sq. ft.  
West Palm Beach: \$528/sq. ft.



West Palm Beach: \$528/sq. ft.  
Palm Beach: \$453/sq. ft.

## Inventory for Sale

Magnolia & Annex	2%
West Palm Beach	3%
Palm Beach	3%

## Avg. Time to Close Over Last 12 Months

Magnolia & Annex	59 days
West Palm Beach	51 days
Palm Beach	56 days