

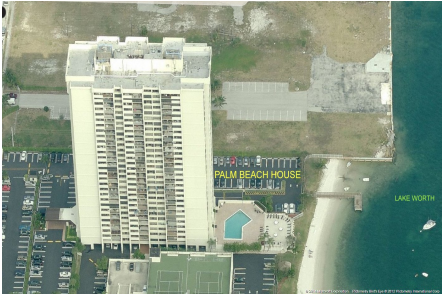
# Palm Beach House

5600 N Flagler Dr, West Palm Beach, FL, Palm Beach 33407

## Building Information

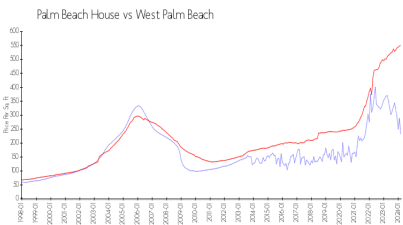
Number of units:	280
Number of active listings for rent:	8
Number of active listings for sale:	19
Building inventory for sale:	6%
Number of sales over the last 12 months:	18
Number of sales over the last 6 months:	11
Number of sales over the last 3 months:	6

Palm Beach House Condominium  
Association Inc  
5600 N Flagler Dr Apt 2307  
West Palm Beach, FL 33407  
(561) 844-8916

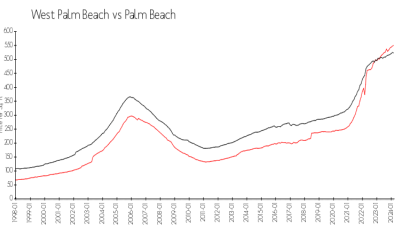


Built in 1978 - 280 units - 30 floors

## Market Information



Palm Beach House:   \$234/sq. ft.  
West Palm Beach:   \$550/sq. ft.



West Palm Beach:   \$550/sq. ft.  
Palm Beach:       \$470/sq. ft.

## Inventory for Sale

Palm Beach House	6%
West Palm Beach	3%
Palm Beach	3%

## Avg. Time to Close Over Last 12 Months

Palm Beach House	104 days
West Palm Beach	51 days
Palm Beach	55 days